

Datasheet for ABIN948077

anti-Laminin beta 1 antibody (AA 1-1786)



[Go to Product page](#)

2 Images

Overview

Quantity:	50 µg
Target:	Laminin beta 1 (LAMB1)
Binding Specificity:	AA 1-1786
Reactivity:	Human
Host:	Mouse
Clonality:	Polyclonal
Conjugate:	This Laminin beta 1 antibody is un-conjugated
Application:	Western Blotting (WB), Immunofluorescence (IF)

Product Details

Purpose:	Mouse polyclonal antibody raised against a full-length human LAMB1 protein.
Immunogen:	LAMB1 (NP_002282.1, 1 a.a. ~ 1786 a.a) full-length human protein.
Sequence:	MGLLQLLAFS FLALCRARVR AQEPEFSYGC AEGSCYPATG DLLIGRAQKL SVTSTCGLHK PEPYCIVSHL QEDKKCFICN SQDPYHETLN PDSHLIENVV TTFAPNRLKI WWQSENGVEN VTIQLDLEAE FHFTHLIMTF KTFRPAAML I ERSSDFGKTW GYRYFAYDC EASFPGISTG PMKKVDDIIC DSRYSIEPS TEDEVIFRAL DPAFKIEDPY SPRIQNLLKI TNLRIKFVKL HTLGDNLLDS RMEIREKYYY AVYDMVVRGN CFCYGHASEC APVDGFNEEV EGMVHGHCMC RHNTKGLNCE LCMDFYHDLP WRPAEGRNSN ACKKCNENEH SISCHFDMAV YLATGNVSGG VCDDCQHNTM GRNCEQCKPF YYQHPERDIR DPNFCERCTC DPAGSQNEGI CDSYTFSTG LIAGQCRCKL NVEGEHCDVC KEGFYDLSSE DPFGCKSCAC NPLGTIPGGN PCDSETGHICY CKRLVTGQHC DQCLPEHWGL SNDLDGCRPC DCDLGGALNN SCFAESGQCS CRPHMIGRQC NEVEPGYYFA TLDHYLYEAE EANLGPVSI VERQYIQDRI PSWTGAGFVR VPEGAYLEFF

Product Details

IDNIPYSMEY DILIRYEPQL PDHWEKAVIT VQRPGRIPTS SRCGNTIPDD DNQVVSLSPG
SRYVVLPRPV CFEKGTNYTV RLELPQYTSS DSDVESPYTL IDSLVMPYC KSLDIFTVGG
SGDGWVTNSA WETFQRYRCL ENSRSVVKTP MTDVCRNIIF SISALLHQTG LACECDPQGS
LSSVCDPNGG QCQCRPNVVG RTCNRCAPGT FGFGPSGCKP CECHLQGSVN AFCNPVTGQC
HCFQGVYARQ CDRCLPGHWG FPSCQPCQC CN GHADDCDPVT GECLNCQDYT MGHNCERCLA
GYYGDPIIGS GDHCRPCPCP DGPDSGRQFA RSCYQDPVTL QLACVCDPGY IGSRCDDCAS
GYFGNPSEVG GSCQPCQCHN NIDTTDPEAC DKETGRCLKC LYHTEGEHCQ FCRFGYYGDA
LRQDCRKCVC NYLGTVQEH NGSDCQCDKA TGQCLCLPNV IGQNCDRCAP NTWQLASGTG
CDPCNCNAAH SFGPSCNEFT GQCQCMPGFG GRTCSECQEL FWGDPDVECR ACDCDPRGIE
TPQCDQSTGQ CVCVEGVEGP RCDKCTRGYS GVFPDCTPCH QCFALWDVII AELTNRTHRF
LEKAKALKIS GVIGPYRETV DSVERKVSEI KDILAQSPAA EPLKNIGNLF EEAekliKDV
TEMMAQVEVK LSDTTSQSNS TAKELDSLQT EAESLDNTVK ELAEQLEFIK NSDIRGALDS
ITKYFQMSLE AEERNASTT EPNSTVEQSA LMRDRVEDVM MERESQFKEK QEEQARLLDE
LAGKLQSLDL SAAAEMTCGT PPGASCSETE CGGPNCRTE GERKCGGPGC GGLVTVAHNA
WQKAMDLDQD VLSALAEVEQ LSKMVSEAKL RADEAKQSAE DILLKTNATK EKMDKSNEEL
RNLIKQIRNF LTQDSADLDS IEAVANEVLK MEMPSTPQQL QNLTEDIRER VESLSQVEVI
LQHSAAIAR AEMLLEEAKR ASKSATDVKV TADMVKEALE EAEKAQVAE KAIKQADEDI
QGTQNLTSI ESETAASEET LFNASQRIFE LERNVEELKR KAAQNSGEAE YIEKVYTVK
QSAEDVKKTL DGELDEKYKK VENLIAKTE ESADARRKAE MLQNEAKTLL AQANSKLQLL
KDLERKYEDN QRYLEDKAQE LARLEGEVRS LLKDISQKVA VYSTCL

Cross-Reactivity:	Human
Characteristics:	Antibody reactive against mammalian transfected lysate.

Target Details

Target:	Laminin beta 1 (LAMB1)
Alternative Name:	LAMB1 (LAMB1 Products)
Background:	Full Gene Name: laminin, beta 1 Synonyms: CLM,MGC142015
Gene ID:	3912
NCBI Accession:	NM_002291

Application Details

Application Notes:	Optimal working dilution should be determined by the investigator.
--------------------	--

Application Details

Restrictions: For Research Use only

Handling

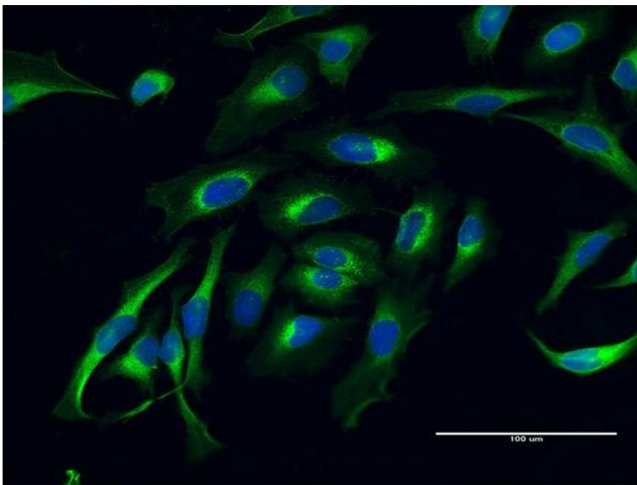
Buffer: In 1x PBS, pH 7.4

Handling Advice: Aliquot to avoid repeated freezing and thawing.

Storage: -20 °C

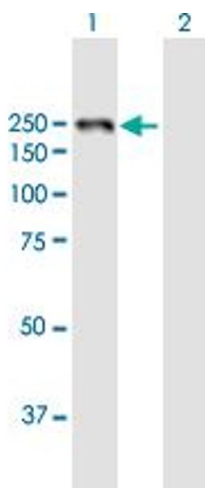
Storage Comment: Store at -20°C or lower. Aliquot to avoid repeated freezing and thawing.

Images



Immunofluorescence

Image 1. Immunofluorescence of purified MaxPab antibody to LAMB1 on HeLa cell. [antibody concentration 10 ug/ml]



Western Blotting

Image 2. Western Blot analysis of LAMB1 expression in transfected 293T cell line by LAMB1 MaxPab polyclonal antibody.

Lane 1: LAMB1 transfected lysate(198.1 KDa).

Lane 2: Non-transfected lysate.