



Datasheet for ABIN948096
anti-SMAD6 antibody (AA 1-496)



[Go to Product page](#)

4 Images

Overview

Quantity:	100 µL
Target:	SMAD6
Binding Specificity:	AA 1-496
Reactivity:	Human
Host:	Rabbit
Clonality:	Polyclonal
Conjugate:	This SMAD6 antibody is un-conjugated
Application:	Western Blotting (WB), Immunoprecipitation (IP), Immunofluorescence (IF)

Product Details

Purpose:	Rabbit polyclonal antibody raised against a full-length human SMAD6 protein.
Immunogen:	SMAD6 (NP_005576.3, 1 a.a. ~ 496 a.a) full-length human protein.
Sequence:	MFRSKRSLV RRLWRSRVVP DREEGSGGG GGGDEDGSLG SRAEPAPRAR EGGGCGRSEV RPVAPRRPRD AVGQRGAQGA GRRRRRAGGPP RPMSEPGAGA GSSLLDVAEP GGPGWLPESD CETVTCLFS ERDAAGAPRD ASDPLAGAAL EPAGGGRSRE ARSRLLEEQ ELKTVTYSLL KRLKERSLDT LLEAVESRGG VPGGCVLVPR ADLRLGGQPA PPQLLLGRLF RWPDLQHAVE LKPLCGCHSF AAAADGPTVC CNPYHFSRLC GPESPPPPYS RLSRDEYKP LDLSDSTLSY TETEATNSLI TAPGEFSDAS MSPDATKPSH WCSVAYWEHR TRVGRLYAVY DQAVSIFYDL PQGS GFCLGQ LNLEQRSESV RRTRSKIGFG ILLSKEPDGV WAYNRGEHPI FVNSPTLDAP GGRALVVRKV PPGYSIKVFD FERSGLQHAP EPDAADGPYD PNSVRISFAK GWGPCYSRQF ITSCPCWLEI LLNNPR

Product Details

Cross-Reactivity:	Human
Characteristics:	Antibody reactive against mammalian transfected lysate.

Target Details

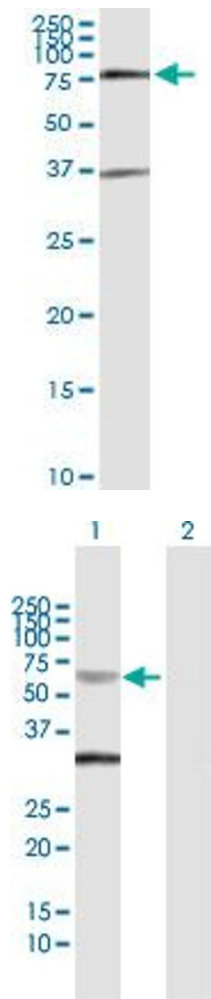
Target:	SMAD6
Alternative Name:	SMAD6 (SMAD6 Products)
Background:	Full Gene Name: SMAD family member 6 Synonyms: HsT17432,MADH6,MADH7
Gene ID:	4091
NCBI Accession:	NM_005585
Pathways:	Chromatin Binding

Application Details

Application Notes:	Optimal working dilution should be determined by the investigator.
Restrictions:	For Research Use only

Handling

Format:	Liquid
Buffer:	No additive
Preservative:	Without preservative
Handling Advice:	Aliquot to avoid repeated freezing and thawing.
Storage:	-20 °C
Storage Comment:	Store at -20°C or lower. Aliquot to avoid repeated freezing and thawing.



Immunoprecipitation

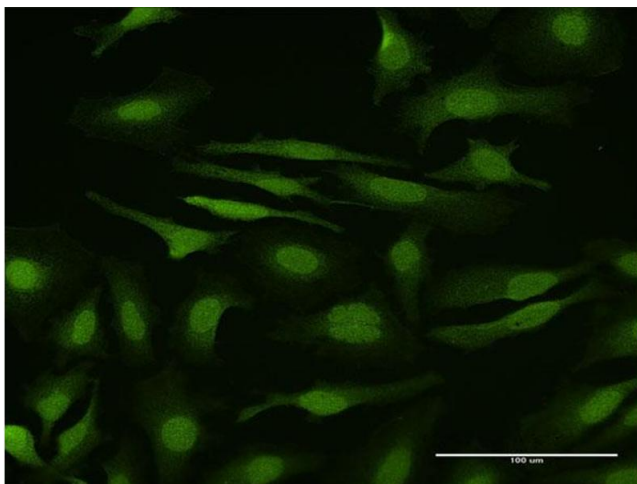
Image 1. Immunoprecipitation of SMAD6 transfected lysate using anti-SMAD6 MaxPab rabbit polyclonal antibody and Protein A Magnetic Bead , and immunoblotted with SMAD6 purified MaxPab mouse polyclonal antibody (B01P) .

Western Blotting

Image 2. Western Blot analysis of SMAD6 expression in transfected 293T cell line by SMAD6 MaxPab polyclonal antibody.

Lane 1: SMAD6 transfected lysate(53.50 KDa).

Lane 2: Non-transfected lysate.



Immunofluorescence

Image 3. Immunofluorescence of purified MaxPab antibody to SMAD6 on HeLa cell. [antibody concentration 10 ug/ml]

Please check the [product details page](#) for more images. Overall 4 images are available for ABIN948096.