

Datasheet for ABIN948107  
**anti-MATN1 antibody (AA 1-496)**



[Go to Product page](#)

1 Image

Overview

Quantity:	50 µg
Target:	MATN1
Binding Specificity:	AA 1-496
Reactivity:	Human
Host:	Mouse
Clonality:	Polyclonal
Conjugate:	This MATN1 antibody is un-conjugated
Application:	Western Blotting (WB)

Product Details

Purpose:	Mouse polyclonal antibody raised against a full-length human MATN1 protein.
Immunogen:	MATN1 (AAI60064.1, 1 a.a. ~ 496 a.a) full-length human protein.
Sequence:	MRVLSGTSLM LCSLLLLLQA LCSPGLAPQS RGHLCRTRPT DLVFFVVDSSR SVRPVEFEKV KVFLSQVIES LDVGPNATRV GMVNYASTVK QEFSLRAHVS KAALLQAVRR IQPLSTGTMT GLAIQFAITK AFGDAEGGRS RSPDISKVI VVDGRPQDS VQDVSARARA SGVELFAIGV GSVDKATLRQ IASEPQDEHV DYVESYSVIE KLSRKFQEAF CVVSDLCATG DHDCEQVCIS SPGSYTCACH EGFTLNSDGK TCNVCSGGGG SSATDLVFLI DGSKSVRPN FELVKKFISQ IVDTLDVSDK LAQVGLVQYS SSVRQEFPLG RFHTKKDIKA AVRNMYSMEK GTMTGAALKY LIDNSFTVSS GARPGAQKVG IVFTDGRSQD YINDAAKKAK DLGFKMFAVG VGNAVEDELRL EIASEPVAEH YFYTADFkti NQIGKKLQKK ICVEEDPCAC ESLVKFQAKV EGLLQALTRK LEAVSKRLAI LENTVV

## Product Details

Cross-Reactivity:	Human
Characteristics:	Antibody reactive against mammalian transfected lysate.

## Target Details

Target:	MATN1
Alternative Name:	MATN1 ( <a href="#">MATN1 Products</a> )
Background:	Full Gene Name: matrilin 1, cartilage matrix protein Synonyms: CMP,CRTM
Gene ID:	4146

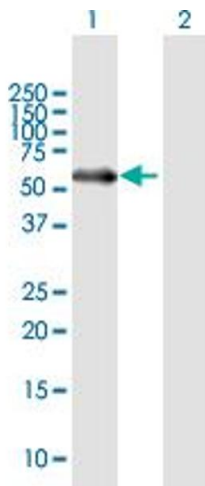
## Application Details

Application Notes:	Optimal working dilution should be determined by the investigator.
Restrictions:	For Research Use only

## Handling

Buffer:	In 1x PBS, pH 7.4
Handling Advice:	Aliquot to avoid repeated freezing and thawing.
Storage:	-20 °C
Storage Comment:	Store at -20°C or lower. Aliquot to avoid repeated freezing and thawing.

## Images



### Western Blotting

**Image 1.** Western Blot analysis of MATN1 expression in transfected 293T cell line by MATN1 MaxPab polyclonal antibody.

Lane 1: MATN1 transfected lysate(54.56 KDa).

Lane 2: Non-transfected lysate.