



[Go to Product page](#)

Datasheet for ABIN948140
anti-ALDH6A1 antibody (AA 1-535)

1 Image

Overview

Quantity:	100 µg
Target:	ALDH6A1
Binding Specificity:	AA 1-535
Reactivity:	Human
Host:	Rabbit
Clonality:	Polyclonal
Conjugate:	This ALDH6A1 antibody is un-conjugated
Application:	Western Blotting (WB)

Product Details

Purpose:	Rabbit polyclonal antibody raised against a full-length human ALDH6A1 protein.
Immunogen:	ALDH6A1 (NP_005580.1, 1 a.a. ~ 535 a.a) full-length human protein.
Sequence:	MAALLAAAV RARILQVSSK VKSSPTWYSA SSFSSSVPTV KLFIGGKFVE SKSDKWIDIH NPATNEVIGR VPQATKAEMD AAIASCKRAF PAWADTSVLS RQQVLLRYQQ LIKENLKEIA KLITLEQGKT LADAEGDVFR GLQVVEHACS VTSLMMGETM PSITKMDMLY SYRLPLGVCA GIAPFNFPAM IPLWMFPMAM VCGNTFLMKP SERVPGATML LAKLLQDSGA PDGTLNIIHG QHEAVNFICD HPDIKAISFV GSNKAGEYIF ERGSRHGKRV QANMGAKNHG VVMPDANKEN TLNQLVGA AF GAAGQRCMAL STAVLVGEAK KWLPELVEHA KNLRVNAGDQ PGADLGPLIT PQAKERV CNL IDSGTKEGAS ILLDGRKIKV KGYENGNFVG PTIISNVKPN MTCYKEEIFG PVLVLETET LDEAIQVNN NPYGNGTAIF TTNGATARKY AHLVDVGQVG VNVPIPVPLP MFSFTGSRSS FRGDTNFY GK QGIQFY TQLK TITSQWKEED ATLSSPAVVM PTMGR

Product Details

Cross-Reactivity:	Human
Characteristics:	Antibody reactive against mammalian transfected lysate.

Target Details

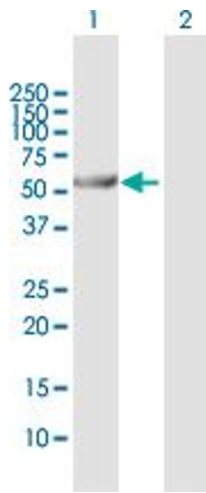
Target:	ALDH6A1
Alternative Name:	ALDH6A1 (ALDH6A1 Products)
Background:	Full Gene Name: aldehyde dehydrogenase 6 family, member A1 Synonyms: MGC40271,MMSADHA,MMSDH
Gene ID:	4329
NCBI Accession:	NM_005589
Pathways:	Brown Fat Cell Differentiation

Application Details

Application Notes:	Optimal working dilution should be determined by the investigator.
Restrictions:	For Research Use only

Handling

Buffer:	In 1x PBS, pH 7.4
Handling Advice:	Aliquot to avoid repeated freezing and thawing.
Storage:	-20 °C
Storage Comment:	Store at -20°C or lower. Aliquot to avoid repeated freezing and thawing.



Western Blotting

Image 1. Western Blot analysis of ALDH6A1 expression in transfected 293T cell line by ALDH6A1 MaxPab polyclonal antibody.

Lane 1: ALDH6A1 transfected lysate(57.80 KDa).

Lane 2: Non-transfected lysate.