

Datasheet for ABIN948154  
**anti-MT2A antibody (AA 1-61)**



[Go to Product page](#)

3 Images

1 Publication

## Overview

Quantity:	100 µg
Target:	MT2A
Binding Specificity:	AA 1-61
Reactivity:	Human
Host:	Mouse
Clonality:	Monoclonal
Conjugate:	This MT2A antibody is un-conjugated
Application:	ELISA, Western Blotting (WB), Immunofluorescence (IF)

## Product Details

Purpose:	Mouse monoclonal antibody raised against a full-length recombinant MT2A.
Immunogen:	MT2A (NP_005944.1, 1 a.a. ~ 61 a.a) full-length recombinant protein with GST tag. MW of the GST tag alone is 26 KDa.
Sequence:	MDPNCSCAAG DSCTCAGSCK CKECKCTSCK KSCCSCPVG CAKCAQGCIC KGASDKCSCC A
Clone:	6G2
Isotype:	IgG2a
Cross-Reactivity:	Human
Characteristics:	Antibody Reactive Against Recombinant Protein.

## Target Details

---

Target:	MT2A
Alternative Name:	MT2A ( <a href="#">MT2A Products</a> )
Background:	Full Gene Name: metallothionein 2A Synonyms: MT2
Gene ID:	4502
NCBI Accession:	<a href="#">NM_005953</a>
Pathways:	<a href="#">Transition Metal Ion Homeostasis</a>

## Application Details

---

Application Notes:	Optimal working dilution should be determined by the investigator.
Restrictions:	For Research Use only

## Handling

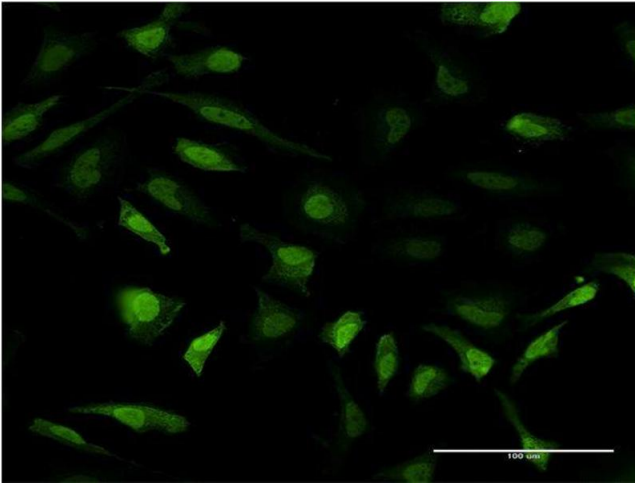
---

Buffer:	In 1x PBS, pH 7.4
Handling Advice:	Aliquot to avoid repeated freezing and thawing.
Storage:	-20 °C
Storage Comment:	Store at -20°C or lower. Aliquot to avoid repeated freezing and thawing.

## Publications

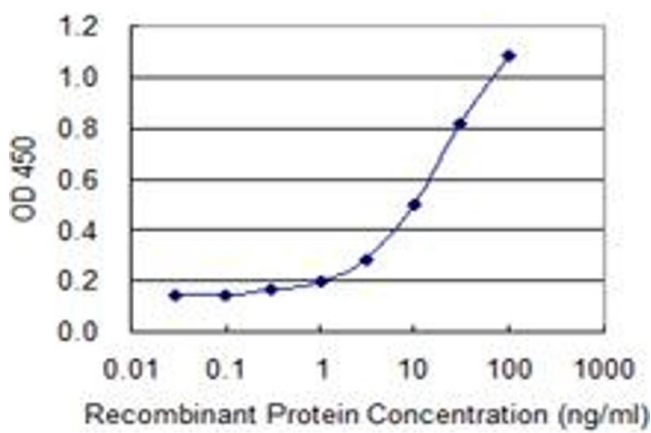
---

Product cited in:	Hartmann, Tousseyn, Döring, Flüchter, Hackstein, Herreman, Ponzoni, de Wolf-Peeters, Facchetti, Gascoyne, Küppers, Steidl, Hansmann: "Macrophages in T cell/histiocyte rich large B cell lymphoma strongly express metal-binding proteins and show a bi-activated phenotype." in: <b>International journal of cancer. Journal international du cancer</b> , Vol. 133, Issue 11, pp. 2609-18, (2013) ( <a href="#">PubMed</a> ).
-------------------	---



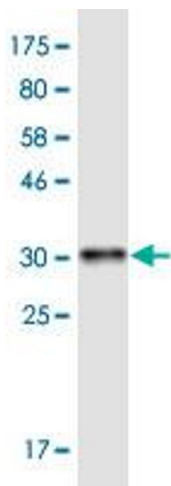
### Immunofluorescence

**Image 1.** Immunofluorescence of monoclonal antibody to MT2A on HeLa cell. [antibody concentration 10 ug/ml]



### ELISA

**Image 2.** Detection limit for recombinant GST tagged MT2A is 0.3 ng/ml as a capture antibody.



### Western Blotting

**Image 3.** Western Blot detection against Immunogen (32.4 KDa) .