



[Go to Product page](#)

Datasheet for ABIN948160
anti-MYL1 antibody (AA 1-194)

1 Image

Overview

Quantity:	50 µg
Target:	MYL1
Binding Specificity:	AA 1-194
Reactivity:	Human
Host:	Mouse
Clonality:	Polyclonal
Conjugate:	This MYL1 antibody is un-conjugated
Application:	Western Blotting (WB)

Product Details

Purpose:	Mouse polyclonal antibody raised against a full-length human MYL1 protein.
Immunogen:	MYL1 (NP_524144.1, 1 a.a. ~ 194 a.a) full-length human protein.
Sequence:	MAPKKDVKKP VAAAAAPAP APAPAPAPAP AKPKEEKIDL SAIKIEFSKE QQDEFKEAFL LFDRTGDSKI TLSQVGDVLR ALGTNPTNAE VRKVLGNPSN EELNAKKIEF EQFLPMMQAI SNNKDQATYE DFVEGLRVFD KEGNGTVMGA ELRHVLATLG EKMKEEEVEA LMAGQEDSNG CINYEAFVKH IMSI
Cross-Reactivity:	Human
Characteristics:	Antibody reactive against mammalian transfected lysate.

Target Details

Target:	MYL1
---------	------

Target Details

Alternative Name:	MYL1 (MYL1 Products)
Background:	Full Gene Name: myosin, light chain 1, alkali, skeletal, fast Synonyms: MLC1F,MLC3F
Gene ID:	4632
NCBI Accession:	NM_079420

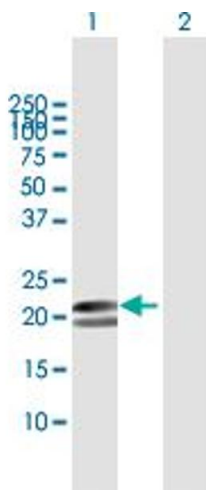
Application Details

Application Notes:	Optimal working dilution should be determined by the investigator.
Restrictions:	For Research Use only

Handling

Buffer:	In 1x PBS, pH 7.4
Handling Advice:	Aliquot to avoid repeated freezing and thawing.
Storage:	-20 °C
Storage Comment:	Store at -20°C or lower. Aliquot to avoid repeated freezing and thawing.

Images



Western Blotting

Image 1. Western Blot analysis of MYL1 expression in transfected 293T cell line by MYL1 MaxPab polyclonal antibody.

Lane 1: MYL1 transfected lysate(21.34 kDa).

Lane 2: Non-transfected lysate.