

Datasheet for ABIN948167  
**anti-NAP1L2 antibody (AA 1-460)**



[Go to Product page](#)

2 Images

## Overview

|                      |   |
|----------------------|---|
| Quantity:            | 100 µL  |
| Target:              | NAP1L2  |
| Binding Specificity: | AA 1-460  |
| Reactivity:          | Human   |
| Host:                | Rabbit  |
| Clonality:           | Polyclonal                                      |
| Conjugate:           | This NAP1L2 antibody is un-conjugated           |
| Application:         | Western Blotting (WB), Immunoprecipitation (IP) |

## Product Details

|                   |   |
|-------------------|---|
| Purpose:          | Rabbit polyclonal antibody raised against a full-length human NAP1L2 protein.   |
| Immunogen:        | NAP1L2 (AAH26325.1, 1 a.a. ~ 460 a.a) full-length human protein.  |
| Sequence:         | MAKSENKEL SESSQEEAGN QIMVEGLGEH LERGEDAAAG LGDDGKCGEE AAAGLGEEGE<br>NGEDTAAGSG EDGKKGDDTD EDSEADRPKG LIGYVLDTDF VESLPVKVKY RVLALKKLQT<br>RAANLESKFL REFHDIERKF AEMYQPLLEK RRQIINAIYE PTEEECEYKS DSEDCDDEEM<br>CHEEMYGNEE GMVHEYVDED DGYEDYYYDY AVEEEEEEEE EDDIEATGEE NKEEEDPKGI<br>PDFWLTVLKN VDTLTPLIKK YDEPILKLLT DIKVKLSDPG EPLSFTLEFH FKPNEYFKNE<br>LLTKTYVLKS KLAYDPPHY RGTAIYSTG CEIDWNEGKN VTLKTIKKKQ KHRIWGTIRT<br>VTEDFPKDSF FNFFSPHGIT SNGRDGNDDF LLGHNLRTYI IPRSVLFFSG DALESQQEGV<br>VREVNDAIYD KIIYDNWMAA IEEVKACCKN LEALVEDIDR |
| Cross-Reactivity: | Human   |

## Product Details

---

Characteristics: Antibody reactive against mammalian transfected lysate.

## Target Details

---

Target: NAP1L2

Alternative Name: NAP1L2 ([NAP1L2 Products](#))

Background: Full Gene Name: nucleosome assembly protein 1-like 2  
Synonyms: BPX,MGC26243

Gene ID: 4674

## Application Details

---

Application Notes: Optimal working dilution should be determined by the investigator.

Restrictions: For Research Use only

## Handling

---

Format: Liquid

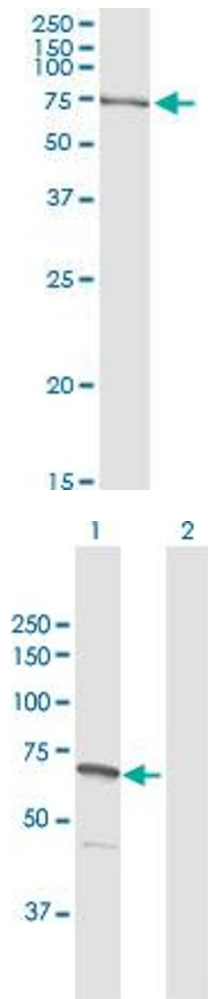
Buffer: No additive

Preservative: Without preservative

Handling Advice: Aliquot to avoid repeated freezing and thawing.

Storage: -20 °C

Storage Comment: Store at -20°C or lower. Aliquot to avoid repeated freezing and thawing.



### Immunoprecipitation

**Image 1.** Immunoprecipitation of NAP1L2 transfected lysate using anti-NAP1L2 MaxPab rabbit polyclonal antibody and Protein A Magnetic Bead, and immunoblotted with NAP1L2 purified MaxPab mouse polyclonal antibody (B01P).

### Western Blotting

**Image 2.** Western Blot analysis of NAP1L2 expression in transfected 293T cell line by NAP1L2 MaxPab polyclonal antibody.

Lane 1: NAP1L2 transfected lysate(52.50 KDa).

Lane 2: Non-transfected lysate.