

Datasheet for ABIN948171
anti-Nucleolin antibody (AA 1-710)



[Go to Product page](#)

2 Images

Overview

Quantity:	50 µg
Target:	Nucleolin (NCL)
Binding Specificity:	AA 1-710
Reactivity:	Human
Host:	Mouse
Clonality:	Polyclonal
Conjugate:	This Nucleolin antibody is un-conjugated
Application:	Western Blotting (WB), Immunofluorescence (IF)

Product Details

Purpose:	Mouse polyclonal antibody raised against a full-length human NCL protein.
Immunogen:	NCL (NP_005372.2, 1 a.a. ~ 710 a.a) full-length human protein.
Sequence:	MVKLAKAGKN QGDPKMMAPP PKEVEEEDSED EEMSEDEEDD SSGEEVVIQ KKGKKAATS AKKVVVSPK KVAVATPAKK AAVTPGKAA ATPAKKTVP AKAVTTPGKK GATPGKALVA TPGKKGAAIP AKGAKNGKNA KKEDSDEEED DDSEEDEEDD EDEDEDEDEI EPAAMKAAAA APASEDEDDE DDEDEDDEDD DEEDDSEEEA METTPAKGKK AAKVVPVKAK NVAEDEDEEE DDEDEDDEDD EDEDEDDEDD DEEEEEEEEE EPVKEAPGKR KKEMAKQKAA PEAKKQKVEG TEPTTAFNLF VGNLNFNKSA PELKTGISDV FAKNDLAVVD VRIGMTRKFG YVDFESAEDL EKALELTGLK VFGNEIKLEK PKGKDSKKER DARTLLAKNL PYKVTQDELK EVFEDAAEIR LVSKDGKSKG IAYIEFKTEA DAEKTFEEKQ GTEIDGRSIS LYYTGEKGQN QDYRGGKNST WSGESKTLVL SNLSYSATEE TLQEVFEKAT FIKVPQNQNG KSKGYAFIEF ASFEDAKEAL NSCNKREIEG RAIRLELQGP RGSFNARSQP SKTLFVKGLS EDTTEETLKE SFDGSRARI

Product Details

VTDRETGSSK GFGFVDFNSE EDAKAAKEAM EDGEIDGNKV TLDWAKPKGE GFGGRRGGGR
GGFGRRGGGR GRRGGFGGRG RGGFGRRGGF RGGRRGGGDH KPQGKKTKE

Cross-Reactivity: Human

Characteristics: Antibody reactive against mammalian transfected lysate.

Target Details

Target: Nucleolin (NCL)

Alternative Name: NCL ([NCL Products](#))

Background: Full Gene Name: nucleolin
Synonyms: C23,FLJ45706

Gene ID: 4691

NCBI Accession: [NM_005381](#)

Pathways: [Ribonucleoprotein Complex Subunit Organization](#)

Application Details

Application Notes: Optimal working dilution should be determined by the investigator.

Restrictions: For Research Use only

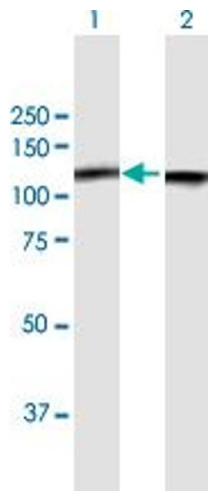
Handling

Buffer: In 1x PBS, pH 7.4

Handling Advice: Aliquot to avoid repeated freezing and thawing.

Storage: -20 °C

Storage Comment: Store at -20°C or lower. Aliquot to avoid repeated freezing and thawing.

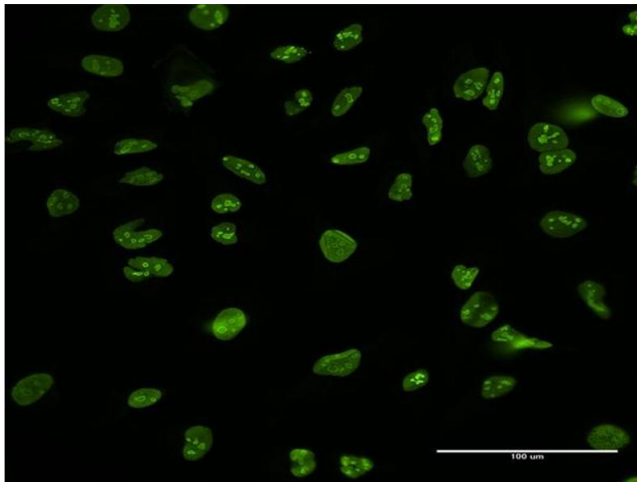


Western Blotting

Image 1. Western Blot analysis of NCL expression in transfected 293T cell line by NCL MaxPab polyclonal antibody.

Lane 1: NCL transfected lysate(76.6 KDa).

Lane 2: Non-transfected lysate.



Immunofluorescence

Image 2. Immunofluorescence of purified MaxPab antibody to NCL on HeLa cell. [antibody concentration 10 ug/ml]