

Datasheet for ABIN948209
anti-SLC22A18AS antibody (AA 1-150)



[Go to Product page](#)

3 Images

Overview

Quantity:	100 µg
Target:	SLC22A18AS
Binding Specificity:	AA 1-150
Reactivity:	Human
Host:	Mouse
Clonality:	Monoclonal
Conjugate:	This SLC22A18AS antibody is un-conjugated
Application:	ELISA, Western Blotting (WB)

Product Details

Purpose:	Mouse monoclonal antibody raised against a full-length recombinant SLC22A18AS.
Immunogen:	SLC22A18AS (AAH30237.1, 1 a.a. ~ 150 a.a) full-length recombinant protein with GST tag. MW of the GST tag alone is 26 KDa.
Sequence:	MRCAEGAWWF SPDGPAGSAA SIWPAEGAEG LPGQLGRDRL EVVYSVPDNDV PGQNGSRRPL VCKITGKCLS VCSEENAKAG GCSAFPLLLS QLGARMTGRE HAHKGPELTT PDSGLPRPPN PALAGFRALA QHSPPLGTST PSAVLLSAAT
Clone:	4B1
Isotype:	IgG2a
Cross-Reactivity:	Human
Characteristics:	Antibody Reactive Against Recombinant Protein.

Target Details

Target:	SLC22A18AS
Alternative Name:	SLC22A18AS (SLC22A18AS Products)
Background:	Full Gene Name: solute carrier family 22 (organic cation transporter), member 18 antisense Synonyms: BWR1B,BWSCR1B,ORCTL2S,SLC22A1LS,p27-BWR1B
Gene ID:	5003

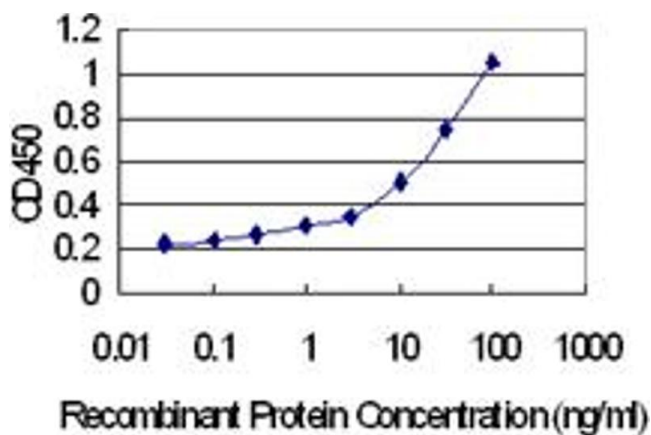
Application Details

Application Notes:	Optimal working dilution should be determined by the investigator.
Restrictions:	For Research Use only

Handling

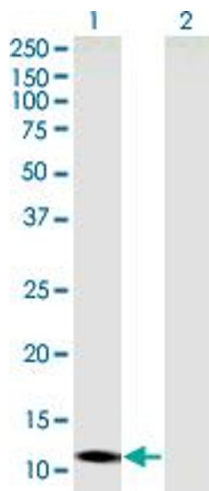
Buffer:	In 1x PBS, pH 7.4
Handling Advice:	Aliquot to avoid repeated freezing and thawing.
Storage:	-20 °C
Storage Comment:	Store at -20°C or lower. Aliquot to avoid repeated freezing and thawing.

Images



ELISA

Image 1. Detection limit for recombinant GST tagged SLC22A18AS is 0.3 ng/ml as a capture antibody.

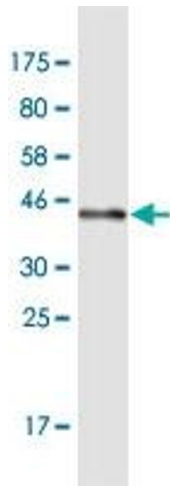


Western Blotting

Image 2. Western Blot analysis of SLC22A18AS expression in transfected 293T cell line by SLC22A18AS monoclonal antibody (M05), clone 4B1.

Lane 1: SLC22A18AS transfected lysate (Predicted MW: 15.4 kDa).

Lane 2: Non-transfected lysate.



Western Blotting

Image 3. Western Blot detection against Immunogen (41.8 kDa).