



Datasheet for ABIN948219  
**anti-Phosducin-Like antibody (AA 1-301)**



[Go to Product page](#)

3 Images

Overview

Quantity:	100 µg
Target:	Phosducin-Like (PDCL)
Binding Specificity:	AA 1-301
Reactivity:	Human
Host:	Mouse
Clonality:	Monoclonal
Conjugate:	This Phosducin-Like antibody is un-conjugated
Application:	Western Blotting (WB), ELISA

Product Details

Purpose:	Mouse monoclonal antibody raised against a full-length recombinant PDCL.
Immunogen:	PDCL (AAH17227, 1 a.a. ~ 301 a.a) full-length recombinant protein with GST tag. MW of the GST tag alone is 26 KDa.
Sequence:	MTTLDDKLLG EKLQYYSSS EDESDHEDK DRGRCAPASS SVPAAELAG EGISVNTGPK GVINDWRRFK QLETEQREEQ CREMERLIKK LSMTCRSHLD EEEEQKQKD LQEKISGKMT LKEFAIMNED QDDEEFLQYQ RKQRMEEMRQ QLHKGPQFKQ VFEISSGEGF LDMIDKEQKS IVIMVHIYED GIPGTEAMNG CMICLAAEYP AVKFCKVKSS VIGASSQFTR NALPALLIYK GGELIGNFVR VTDQLGDDFF AVDLEAFLQE FGLLPEKEVL VLTSVRNSAT CHSESDSLEI D
Clone:	4G5
Isotype:	IgG2a
Cross-Reactivity:	Human

## Product Details

Characteristics: Antibody Reactive Against Recombinant Protein.

## Target Details

Target: Phosducin-Like (PDCL)

Alternative Name: PDCL ([PDCL Products](#))

Background: Full Gene Name: phosducin-like  
Synonyms: DKFZp564M1863,PhLP

Gene ID: 5082

## Application Details

Application Notes: Optimal working dilution should be determined by the investigator.

Restrictions: For Research Use only

## Handling

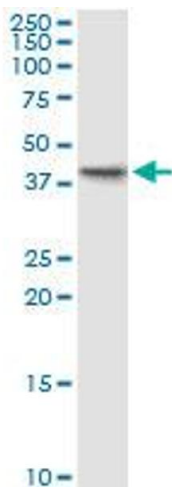
Buffer: In 1x PBS, pH 7.4

Handling Advice: Aliquot to avoid repeated freezing and thawing.

Storage: -20 °C

Storage Comment: Store at -20°C or lower. Aliquot to avoid repeated freezing and thawing.

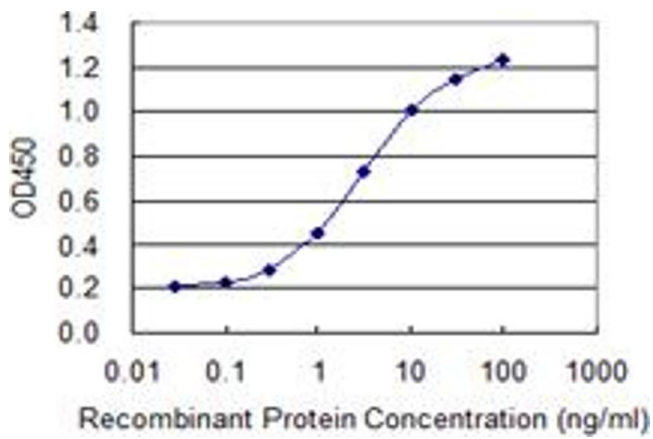
## Images



### Western Blotting

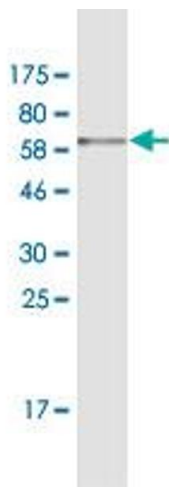
**Image 1.** PDCL monoclonal antibody (M03), clone 4G5.

Western Blot analysis of PDCL expression in Jurkat.



### ELISA

**Image 2.** Detection limit for recombinant GST tagged PDCL is 0.03 ng/ml as a capture antibody.



### Western Blotting

**Image 3.** Western Blot detection against Immunogen (58.85 kDa).