

Datasheet for ABIN948225  
**anti-CHMP1A antibody (AA 1-196)**[Go to Product page](#)

## 1 Image

## Overview

Quantity:	50 µg
Target:	CHMP1A
Binding Specificity:	AA 1-196
Reactivity:	Human
Host:	Mouse
Clonality:	Polyclonal
Conjugate:	This CHMP1A antibody is un-conjugated
Application:	Western Blotting (WB)

## Product Details

Purpose:	Mouse polyclonal antibody raised against a full-length human CHMP1A protein.
Immunogen:	CHMP1A (NP_002759.2, 1 a.a. ~ 196 a.a) full-length human protein.
Sequence:	MDDTLFQLKF TAKQLEKLAK KAEKDSKAEQ AKVKKALLQK NVECARVYAE NAIRKKNEGV NWLRMASRVD AVASKVQTAV TMKGVTKNMA QVTKALDKAL STMDLQKVSS VMDRFEQQVQ NLDVHTSVME DSMSSATTLT TPQEQVDSL I MQIAEENGLE VLDQLSQLPE GASAVGEESV RSQEDQLSRR LAALRN
Cross-Reactivity:	Human
Characteristics:	Antibody reactive against mammalian transfected lysate.

## Target Details

Target:	CHMP1A
---------	--------

Target Details

Alternative Name:	CHMP1A ( <a href="#">CHMP1A Products</a> )
Background:	Full Gene Name: chromatin modifying protein 1A Synonyms: CHMP1,KIAA0047,PCOLN3,PRSM1
Gene ID:	5119
NCBI Accession:	<a href="#">NM_002768</a>

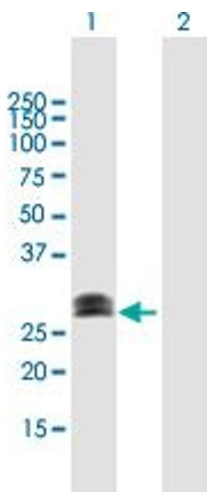
Application Details

Application Notes:	Optimal working dilution should be determined by the investigator.
Restrictions:	For Research Use only

Handling

Buffer:	In 1x PBS, pH 7.4
Handling Advice:	Aliquot to avoid repeated freezing and thawing.
Storage:	-20 °C
Storage Comment:	Store at -20°C or lower. Aliquot to avoid repeated freezing and thawing.

Images



Western Blotting

**Image 1.** Western Blot analysis of CHMP1A expression in transfected 293T cell line by CHMP1A MaxPab polyclonal antibody.

Lane 1: PCOLN3 transfected lysate(21.56 KDa).

Lane 2: Non-transfected lysate.