



[Go to Product page](#)

Datasheet for ABIN948260  
**anti-PIGH antibody (AA 1-188)**

1 Image

Overview

Quantity:	100 µL
Target:	PIGH
Binding Specificity:	AA 1-188
Reactivity:	Human
Host:	Rabbit
Clonality:	Polyclonal
Conjugate:	This PIGH antibody is un-conjugated
Application:	Immunoprecipitation (IP)

Product Details

Purpose:	Rabbit polyclonal antibody raised against a full-length human PIGH protein.
Immunogen:	PIGH (NP_004560.1, 1 a.a. ~ 188 a.a) full-length human protein.
Sequence:	MEDERSFSDI CGRLALQRR YYSPSCREFC LSCPRLSLRS LTAVTCTVWL AAYGLFTLCE NSMILSAAIF ITLLGLLGYL HFVKIDQETL LIIDSLGIQM TSSYASGKES TTFIEMGKVK DIVINEAIYM QKVIYYLCIL LKDPVEPHGI SQVVPVFQSA KPRLDCLIEV YRSCQEILAH QKATSTSP
Cross-Reactivity:	Human
Characteristics:	Antibody reactive against mammalian transfected lysate.

Target Details

Target:	PIGH
---------	------

## Target Details

Alternative Name: PIGH ([PIGH Products](#))

Background: Full Gene Name: phosphatidylinositol glycan anchor biosynthesis, class H  
Synonyms: GPI-H

Gene ID: 5283

NCBI Accession: [NM\\_004569](#)

## Application Details

Application Notes: Optimal working dilution should be determined by the investigator.

Restrictions: For Research Use only

## Handling

Format: Liquid

Buffer: No additive

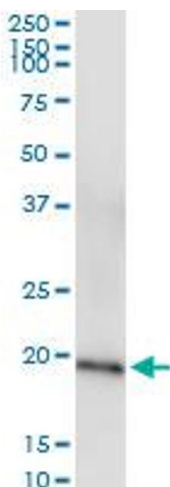
Preservative: Without preservative

Handling Advice: Aliquot to avoid repeated freezing and thawing.

Storage: -20 °C

Storage Comment: Store at -20°C or lower. Aliquot to avoid repeated freezing and thawing.

## Images



### Immunoprecipitation

**Image 1.** Immunoprecipitation of PIGH transfected lysate using anti-PIGH MaxPab rabbit polyclonal antibody and Protein A Magnetic Bead, and immunoblotted with PIGH purified MaxPab mouse polyclonal antibody (B01P).