



[Go to Product page](#)

Datasheet for ABIN948294  
**anti-PPEF1 antibody (AA 1-653)**

4 Images

Overview

Quantity:	100 µL
Target:	PPEF1
Binding Specificity:	AA 1-653
Reactivity:	Human
Host:	Rabbit
Clonality:	Polyclonal
Conjugate:	This PPEF1 antibody is un-conjugated
Application:	Western Blotting (WB), Immunofluorescence (IF), Immunoprecipitation (IP)

Product Details

Purpose:	Rabbit polyclonal antibody raised against a full-length human PPEF1 protein.
Immunogen:	PPEF1 (NP_006231.2, 1 a.a. ~ 653 a.a) full-length human protein.
Sequence:	MGCSSSSTKT RRSDSLRAA LIIQNWYRGY KARLKARQHY ALTIFQSIEY ADEQQQMQLS TFFSFMLENY THIHKEEEL RNQSLESEQD MRDRWDYVDS IDVPDSYNGP RLQFPLTCTD IDLLLEAFKE QQILHAHYVL EVLFETKKVL KQMPNFTHIQ TSPSKEVTIC GDLHGKLLDDL FLIFYKNGLP SERNPYVFNG DFVDRGKNSI EILMILCVSF LVYPNDLHLN RGNHEDFMMN LRYGFTKEIL HKYKLGKRI LQILEEFYAW LPIGTVDNE ILVIHGGISE TTDLNLLHRV ERNKMKSVLI PPTETNRDHD TDSKHNVKGV TFNAHGRIKT NGSPTEHLTE HEWEQIIDIL WSDPRGKNGC FPNTCRGGGC YFGPDVTSKI LNKYQLKMLI RSHECKPEGY EICHGDKVVT IFSASNYEE GSNRGAYIKL CSGTTPRFFQ YQVTKATCFQ PLRQRVDTME NSAIKILRER VISRSDLTR AFQLQDHRKS GKLSVSQWAF CMENILGLNL PWRSLSSNLV NIDQNGNVEY MSSFQNIKIE KPVQEAHSTL VETLYRYRSD LEIIFNAIDT DHSGLISVEE FRAMWKLFFS

## Product Details

---

HYNVHIDDSQ VNKLANIMDL NKDGSIDFNE FLKAFYVVHR YEDLMKPDVT NLG

Cross-Reactivity: Human

Characteristics: Antibody reactive against mammalian transfected lysate.

## Target Details

---

Target: PPEF1

Alternative Name: PPEF1 ([PPEF1 Products](#))

Background: Full Gene Name: protein phosphatase, EF-hand calcium binding domain 1  
Synonyms: PP7,PPEF,PPP7C

Gene ID: 5475

NCBI Accession: [NM\\_006240](#)

Pathways: [Regulation of G-Protein Coupled Receptor Protein Signaling](#)

## Application Details

---

Application Notes: Optimal working dilution should be determined by the investigator.

Restrictions: For Research Use only

## Handling

---

Format: Liquid

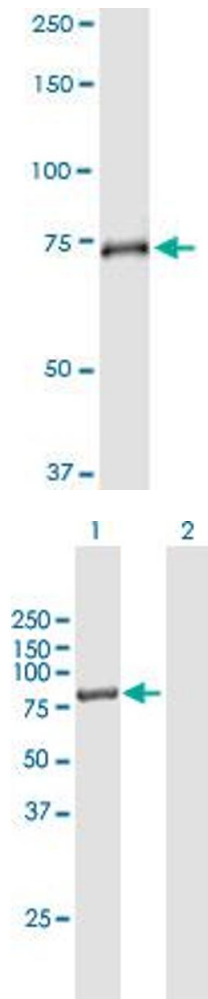
Buffer: No additive

Preservative: Without preservative

Handling Advice: Aliquot to avoid repeated freezing and thawing.

Storage: -20 °C

Storage Comment: Store at -20°C or lower. Aliquot to avoid repeated freezing and thawing.



### Immunoprecipitation

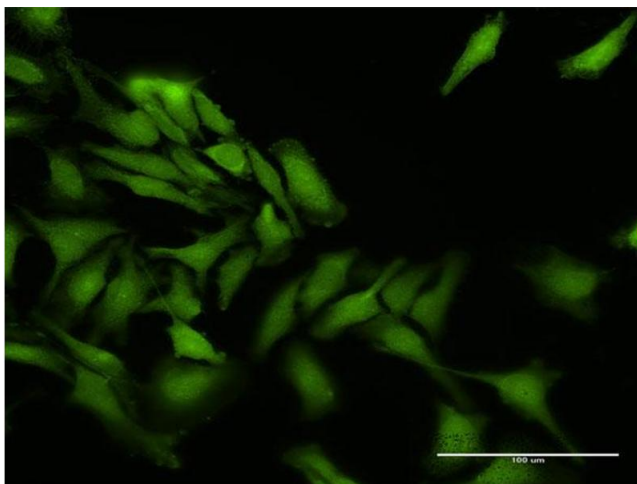
**Image 1.** Immunoprecipitation of PPEF1 transfected lysate using anti-PPEF1 MaxPab rabbit polyclonal antibody and Protein A Magnetic Bead , and immunoblotted with PPEF1 purified MaxPab mouse polyclonal antibody (B01P) .

### Western Blotting

**Image 2.** Western Blot analysis of PPEF1 expression in transfected 293T cell line by PPEF1 MaxPab polyclonal antibody.

Lane 1: PPEF1 transfected lysate(75.8 KDa).

Lane 2: Non-transfected lysate.



### Immunofluorescence

**Image 3.** Immunofluorescence of purified MaxPab antibody to PPEF1 on HeLa cell. [antibody concentration 30 ug/ml]

Please check the [product details page](#) for more images. Overall 4 images are available for ABIN948294.