

Datasheet for ABIN948379
anti-RALGDS antibody (AA 1-902)



[Go to Product page](#)

2 Images

Overview

| | |
|----------------------|---|
| Quantity: | 100 µL |
| Target: | RALGDS |
| Binding Specificity: | AA 1-902 |
| Reactivity: | Human |
| Host: | Rabbit |
| Clonality: | Polyclonal |
| Conjugate: | This RALGDS antibody is un-conjugated |
| Application: | Western Blotting (WB), Immunoprecipitation (IP) |

Product Details

| | |
|------------|--|
| Purpose: | Rabbit polyclonal antibody raised against a full-length human RALGDS protein. |
| Immunogen: | RALGDS (AAH59362.1, 1 a.a. ~ 902 a.a) full-length human protein. |
| Sequence: | MVQRMWAEAA GPAGGAEP LF PGSRRSRVW DAVRLEVGVP DSCPVLHSF TQLDPLPRP ESSTQEIGEE LINGVIYSIS LRKVQLHHGG NKGQRWLGYE NESALNLYET CKVRTVKAGT LEKLVEHLVP AFQGS DLSYV TIFLCTYRAF TTTQQVLDLL FKRYGCILPY SDEDGGPQDQ LKNAISSILG TWLDQYSEDF CQPPDFPCLK QLVAYVQLNM PGSDLERRAH LLLAQLHSE PIEAEPEALS PVPALKPTPE LELALTPARA PSPVPAPAPE PEPAPTPAPG SELEVAPAPA PELQQAPEPA VGLESAPAPA LELEPAPEQD PAPSQTLELE PAPAPVPSLQ PSWSPVVAE NGLSEEKPHL LVFPDLVAE QFTLMDAELF KKVVPYHCLG SIWSQRDKKG KEHLAPTIRA TVTQFN SVAN CVITTCLG NR STKAPDRARV VEHWIEVARE CRILKNFSSL YAILSALQSN SIHRLKKTWE DVSRDSFRIF QKLSEIFSDE NNYSLSRELL IKEGTSKFAT LEMNPKRAQK RPKETGIIQG TVPYLGTFLT DLVMLDTAMK DYLYGRLINF EKRRKEFEVI AQIKLLQSAC |

Product Details

NNYSIAPDEQ FGAWFRAVER LSETESYNLS CELEPPSESA SNTLRTKKNT AIVKRWSDRQ
APSTELSTSG SSSKSCDQL RCGPYLSSGD IADALSVHSA GSSSSDVEEI NISFVPESPD
GQEKFWESA SQSSPETSIGI SSASSSTSSS SASTTPVAAT RTHKRSVSGI CNSSSALPLY
NQQVGDCCII RVSLDVDNGN MYKSILVTSQ DKAPAVIRKA MDKHNLEEEE PEDYELLQIL
SDDRKLKIPK NANVFYAMNS TANYDFVLKK RTFTKGVKVK HGASSTLPRM KQKGLKIAKG IF

| | |
|-------------------|---|
| Cross-Reactivity: | Human |
| Characteristics: | Antibody reactive against mammalian transfected lysate. |

Target Details

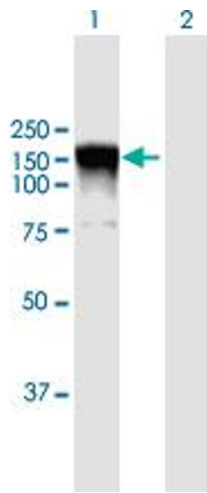
| | |
|-------------------|--|
| Target: | RALGDS |
| Alternative Name: | RALGDS (RALGDS Products) |
| Background: | Full Gene Name: ral guanine nucleotide dissociation stimulator Synonyms: FLJ20922, RGF, RaGef |
| Gene ID: | 5900 |
| Pathways: | Neurotrophin Signaling Pathway |

Application Details

| | |
|--------------------|--|
| Application Notes: | Optimal working dilution should be determined by the investigator. |
| Restrictions: | For Research Use only |

Handling

| | |
|------------------|--|
| Format: | Liquid |
| Buffer: | No additive |
| Preservative: | Without preservative |
| Handling Advice: | Aliquot to avoid repeated freezing and thawing. |
| Storage: | -20 °C |
| Storage Comment: | Store at -20°C or lower. Aliquot to avoid repeated freezing and thawing. |

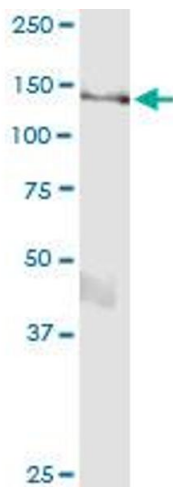


Western Blotting

Image 1. Western Blot analysis of RALGDS expression in transfected 293T cell line by RALGDS MaxPab polyclonal antibody.

Lane 1: RALGDS transfected lysate(99.3 KDa).

Lane 2: Non-transfected lysate.



Immunoprecipitation

Image 2. Immunoprecipitation of RALGDS transfected lysate using anti-RALGDS MaxPab rabbit polyclonal antibody and Protein A Magnetic Bead , and immunoblotted with RALGDS purified MaxPab mouse polyclonal antibody (B01P) .