



Datasheet for ABIN948403
anti-RFX5 antibody (AA 1-616)



[Go to Product page](#)

3 Images

Overview

Quantity:	50 µg
Target:	RFX5
Binding Specificity:	AA 1-616
Reactivity:	Human
Host:	Mouse
Clonality:	Polyclonal
Conjugate:	This RFX5 antibody is un-conjugated
Application:	Western Blotting (WB), Immunofluorescence (IF)

Product Details

Purpose:	Mouse polyclonal antibody raised against a full-length human RFX5 protein.
Immunogen:	RFX5 (NP_000440.1, 1 a.a. ~ 616 a.a) full-length human protein.
Sequence:	MAEDEPDAKS PKTGGRAPPG GAEAGEPTTL LQRLRGITISK AVQNKVEGIL QDVQKFSNDND KLYLYLQLPS GPTTGDKSSE PSTLSNEEYM YAYRWIRNHL EEHTDTCCLK QSVYDAYRKY CESLACCRPL STANFGKIIR EIFPDIKARR LGGRGQSKYC YSGIRRKTLV SMPPLGLDL KGSEPEMGP EVTPAPRDEL VEAACALTCD WAERILKRSF SSIVEVARFL LQQHLISARS AHAHVLMKAMG LAEEDHAPR ERSSKPKNGL ENPEGGAHKK PERLAQPPKD LEARTGAGPL ARGERKKSVV ESSAPGANNL QVNALVARLP LLLPRAPRSL IPPIPVSPPI LAPRLSSGAL KVATLPLSSR AGAPPAVPI INMILPTVPA LPGPGPGPGR APPGGLTQPR GTENREVGIG GDQGPDKGV KRTRAEVPVSE ASGQAPPAKA AKQDIEDTAS DAKRKRGRPR KKSGGSGERN STPLKSAAM ESAQSSRLPW ETWGGGEGN SAGGAERPGP MGEAEKGAVL AQGQGDGTVS KGGRGPQSQH TKEAEDKIPL VPSKSVIKG SRSQKEAFPL AKGEVDTAPQ GNKDLKEHVL

Product Details

QSSLSQEHKD PKATPP

Cross-Reactivity: Human

Characteristics: Antibody reactive against mammalian transfected lysate.

Target Details

Target: RFX5

Alternative Name: RFX5 ([RFX5 Products](#))

Background: Full Gene Name: regulatory factor X, 5 (influences HLA class II expression)
Synonyms:

Gene ID: 5993

NCBI Accession: [NM_000449](#)

Application Details

Application Notes: Optimal working dilution should be determined by the investigator.

Restrictions: For Research Use only

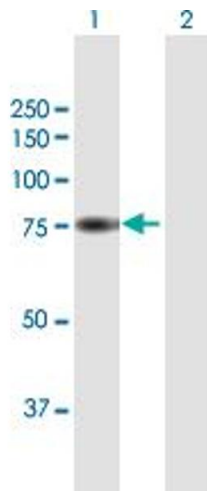
Handling

Buffer: In 1x PBS, pH 7.4

Handling Advice: Aliquot to avoid repeated freezing and thawing.

Storage: -20 °C

Storage Comment: Store at -20°C or lower. Aliquot to avoid repeated freezing and thawing.

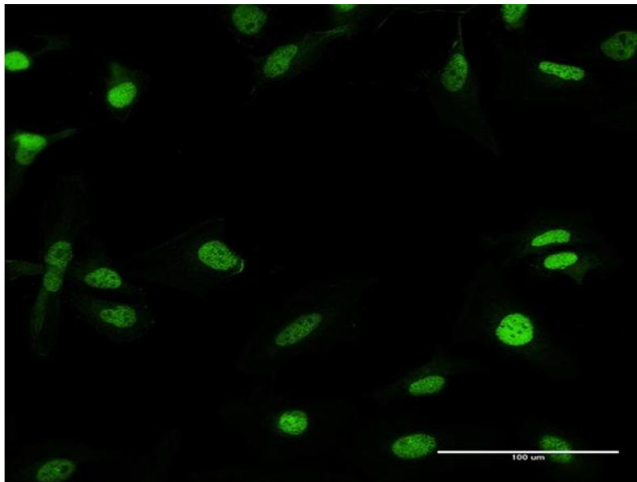


Western Blotting

Image 1. Western Blot analysis of RFX5 expression in transfected 293T cell line by RFX5 MaxPab polyclonal antibody.

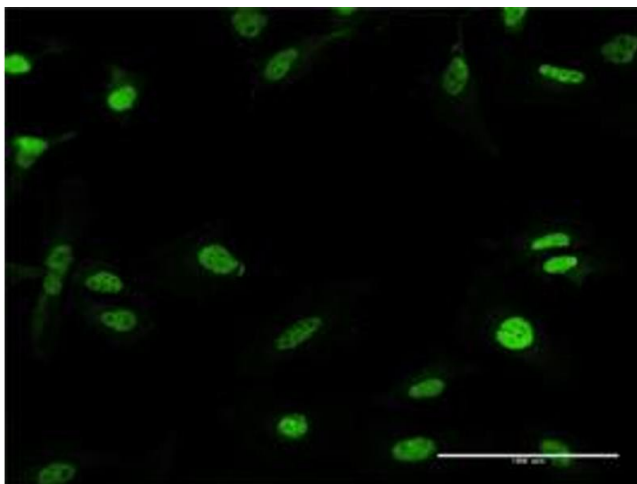
Lane 1: RFX5 transfected lysate(65.30 KDa).

Lane 2: Non-transfected lysate.



Immunofluorescence

Image 2. Immunofluorescence of purified MaxPab antibody to RFX5 on HeLa cell. [antibody concentration 10 μg/ml]



Immunofluorescence

Image 3. Immunofluorescence of purified MaxPab antibody to RFX5 on HeLa cell. (antibody concentration 10 μg/mL)