

Datasheet for ABIN948410
anti-RLF antibody (AA 1805-1913)



[Go to Product page](#)

2 Images

1 Publication

Overview

Quantity:	100 µg
Target:	RLF
Binding Specificity:	AA 1805-1913
Reactivity:	Human
Host:	Mouse
Clonality:	Monoclonal
Conjugate:	This RLF antibody is un-conjugated
Application:	Western Blotting (WB), ELISA

Product Details

Purpose:	Mouse monoclonal antibody raised against a partial recombinant RLF.
Immunogen:	RLF (NP_036553.1, 1805 a.a. ~ 1913 a.a) partial recombinant protein with GST tag. MW of the GST tag alone is 26 KDa.
Sequence:	SNDLTGNVVA NNMVNDSEPE VDIPHSSSDS TIHENLTAIP PLIVAETTTV PSLENLRVWL DKALTDGEL ALKQLHYLRP VVVLERSKFS TPILDLFPTK KTDELCVGS
Clone:	2G2
Isotype:	IgG2a
Cross-Reactivity:	Human
Characteristics:	Antibody Reactive Against Recombinant Protein.

Target Details

Target:	RLF
Alternative Name:	RLF (RLF Products)
Background:	Full Gene Name: rearranged L-myc fusion Synonyms: MGC142226,ZN-15L,ZNF292L
Gene ID:	6018
NCBI Accession:	NM_012421

Application Details

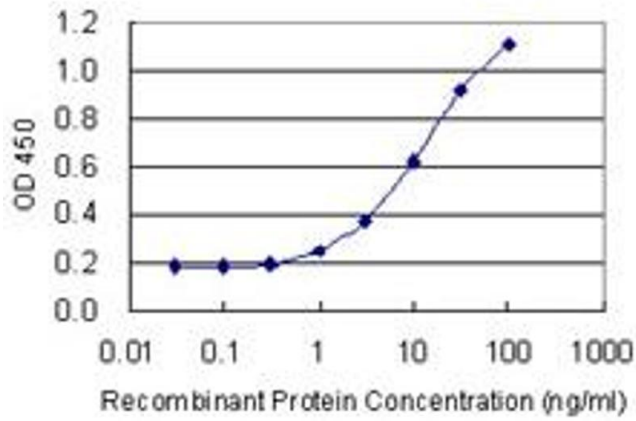
Application Notes:	Optimal working dilution should be determined by the investigator.
Restrictions:	For Research Use only

Handling

Buffer:	In 1x PBS, pH 7.4
Handling Advice:	Aliquot to avoid repeated freezing and thawing.
Storage:	-20 °C
Storage Comment:	Store at -20°C or lower. Aliquot to avoid repeated freezing and thawing.

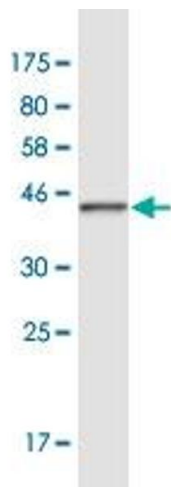
Publications

Product cited in:	Daxinger, Harten, Oey, Epp, Isabel, Huang, Whitelaw, Apedaile, Sorolla, Yong, Bharti, Sutton, Ashe, Pang, Wallace, Gerhardt, Blewitt, Jeddeloh, Whitelaw: "An ENU mutagenesis screen identifies novel and known genes involved in epigenetic processes in the mouse." in: Genome biology , Vol. 14, Issue 9, pp. R96, (2014) (PubMed).
-------------------	---



ELISA

Image 1. Detection limit for recombinant GST tagged RLF is 0.3 ng/ml as a capture antibody.



Western Blotting

Image 2. Western Blot detection against Immunogen (37.73 KDa) .