

Datasheet for ABIN948426
anti-RPS6KB2 antibody (AA 1-482)



[Go to Product page](#)

2 Images

Overview

Quantity:	100 µL
Target:	RPS6KB2
Binding Specificity:	AA 1-482
Reactivity:	Human
Host:	Rabbit
Clonality:	Polyclonal
Conjugate:	This RPS6KB2 antibody is un-conjugated
Application:	Western Blotting (WB), Immunoprecipitation (IP)

Product Details

Purpose:	Rabbit polyclonal antibody raised against a full-length human RPS6KB2 protein.
Immunogen:	RPS6KB2 (AAH06106.3, 1 a.a. ~ 482 a.a) full-length human protein.
Sequence:	MAAVFDLDLE TEEGSEGEPELSPADACP LAELRAAGLE PVGHYEEVEL TETSVNVGPE RIGPHSFELL RVLGKGGYGK VFQVRKVQGT NLGKIYAMKV LRKAKIVRNA KDTAHTRAER NILESVKHPF IVELAYAFQT GKKLYLILEC LSGGELFTHL EREGIFLEDT ACFYLAEITL ALGHLHSQGI IYRDLKPENI MLSSQGHIKL TDFGLCKESI HEGAVTHTFC GTIEYMAPEI LVRSGHNRAV DWWSLGALMY DMLTGSPFFT AENRKKTMDK IIRGKLALPP YLTPDARDLV KKFLKRNPQS RIGGGPGDAA DVQRHPFFRH MNWDDLLAWR VDPPFRPCLQ SEEDVSQFDT RFTRQTPVDS PDDTALSESA NQAFLGFTYV APSVLDSIKE GFSFQPKLRS PRRLNSSPRA PVSPKLFSPF EGRPSPSLP EPTLPLPL LPPPPSTTA PLPIRPPSGT KSKRGRGR GR
Cross-Reactivity:	Human

Product Details

Characteristics: Antibody reactive against mammalian transfected lysate.

Target Details

Target: RPS6KB2

Alternative Name: RPS6KB2 ([RPS6KB2 Products](#))

Background: Full Gene Name: ribosomal protein S6 kinase, 70 kDa, polypeptide 2
Synonyms: KLS,P70-beta,P70-beta-1,P70-beta-2,S6K-beta2,S6K2,SRK,STK14B,p70(S6K)-beta,p70S6Kb

Gene ID: 6199

Pathways: [PI3K-Akt Signaling](#), [RTK Signaling](#), [AMPK Signaling](#), [Fc-epsilon Receptor Signaling Pathway](#), [EGFR Signaling Pathway](#), [Neurotrophin Signaling Pathway](#)

Application Details

Application Notes: Optimal working dilution should be determined by the investigator.

Restrictions: For Research Use only

Handling

Format: Liquid

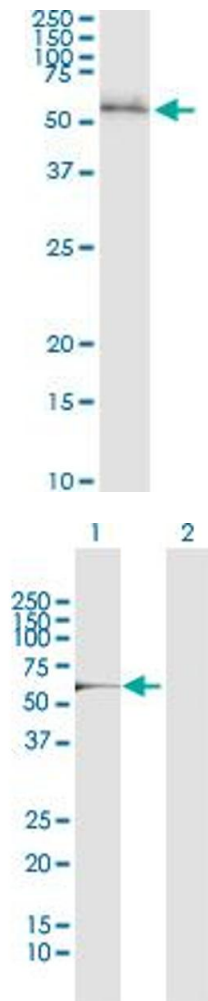
Buffer: No additive

Preservative: Without preservative

Handling Advice: Aliquot to avoid repeated freezing and thawing.

Storage: -20 °C

Storage Comment: Store at -20°C or lower. Aliquot to avoid repeated freezing and thawing.



Immunoprecipitation

Image 1. Immunoprecipitation of RPS6KB2 transfected lysate using anti-RPS6KB2 MaxPab rabbit polyclonal antibody and Protein A Magnetic Bead , and immunoblotted with RPS6KB2 MaxPab mouse polyclonal antibody (B01) .

Western Blotting

Image 2. Western Blot analysis of RPS6KB2 expression in transfected 293T cell line by RPS6KB2 MaxPab polyclonal antibody.

Lane 1: RPS6KB2 transfected lysate(53.40 KDa).

Lane 2: Non-transfected lysate.