



Datasheet for ABIN948436
anti-S100A10 antibody (AA 1-97)



[Go to Product page](#)

4 Images

Overview

Quantity:	50 µg
Target:	S100A10
Binding Specificity:	AA 1-97
Reactivity:	Human
Host:	Mouse
Clonality:	Polyclonal
Conjugate:	This S100A10 antibody is un-conjugated
Application:	Western Blotting (WB), Immunofluorescence (IF)

Product Details

Purpose:	Mouse polyclonal antibody raised against a full-length human S100A10 protein.
Immunogen:	S100A10 (AAH15973, 1 a.a. ~ 97 a.a) full-length human protein.
Sequence:	MPSQMEHAME TMMFTFHKFA GDKGYLTKED LRVLMEKEFP GFLENQKDPL AVDKIMKDLD QCRDGKVGFGQ SFFSLIAGLT IACNDYFVVH MKQKGGK
Cross-Reactivity:	Human
Characteristics:	Antibody reactive against mammalian transfected lysate.

Target Details

Target:	S100A10
Alternative Name:	S100A10 (S100A10 Products)

Target Details

Background:	Full Gene Name: S100 calcium binding protein A10 Synonyms: 42C,ANX2L,ANX2LG,CAL1L,CLP11,Ca[1],GP11,MGC111133,P11,p10
Gene ID:	6281
Pathways:	S100 Proteins

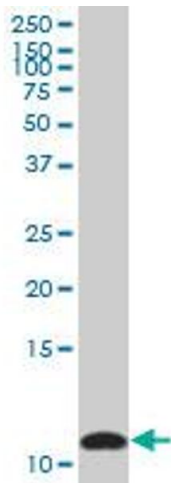
Application Details

Application Notes:	Optimal working dilution should be determined by the investigator.
Restrictions:	For Research Use only

Handling

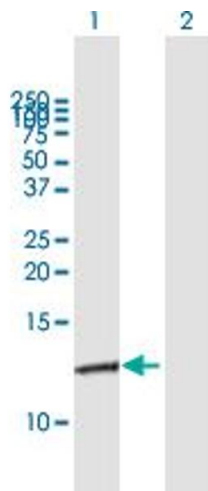
Buffer:	In 1x PBS, pH 7.4
Handling Advice:	Aliquot to avoid repeated freezing and thawing.
Storage:	-20 °C
Storage Comment:	Store at -20°C or lower. Aliquot to avoid repeated freezing and thawing.

Images



Western Blotting

Image 1. S100A10 MaxPab polyclonal antibody. Western Blot analysis of S100A10 expression in human lung cancer.

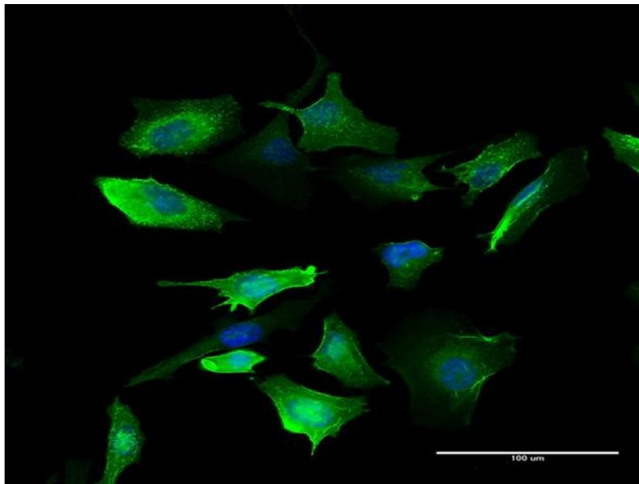


Western Blotting

Image 2. Western Blot analysis of S100A10 expression in transfected 293T cell line by S100A10 MaxPab polyclonal antibody.

Lane 1: S100A10 transfected lysate (10.78 kDa).

Lane 2: Non-transfected lysate.



Immunofluorescence

Image 3. Immunofluorescence of purified MaxPab antibody to S100A10 on HeLa cell. [antibody concentration 10 µg/ml]

Please check the [product details page](#) for more images. Overall 4 images are available for ABIN948436.