



[Go to Product page](#)

Datasheet for ABIN948447
anti-CCL15 antibody (AA 1-113)

2 Images

Overview

Quantity:	100 µL
Target:	CCL15
Binding Specificity:	AA 1-113
Reactivity:	Human
Host:	Rabbit
Clonality:	Polyclonal
Conjugate:	This CCL15 antibody is un-conjugated
Application:	Western Blotting (WB), Immunoprecipitation (IP)

Product Details

Purpose:	Rabbit polyclonal antibody raised against a full-length human CCL15 protein.
Immunogen:	CCL15 (NP_004158.2, 1 a.a. ~ 113 a.a) full-length human protein.
Sequence:	MKVSVAALSC LMLVAVLGSQ AQFINDAETE LMMSKLPLEN PVVLNSFHFA ADCCTSYISQ SIPCRLMKS Y FETSSECSKP GVIFLTKKGR QVCAKPSGPG VQDCMKLKP YSI
Cross-Reactivity:	Human
Characteristics:	Antibody reactive against mammalian transfected lysate.

Target Details

Target:	CCL15
Alternative Name:	CCL15 (CCL15 Products)

Target Details

Background:	Full Gene Name: chemokine (C-C motif) ligand 15 Synonyms: HCC-2,HMRP-2B,LKN1,Lkn-1,MIP-1d,MIP-5,NCC-3,NCC3,SCYA15,SCYL3,SY15
Gene ID:	6359
NCBI Accession:	NM_004167

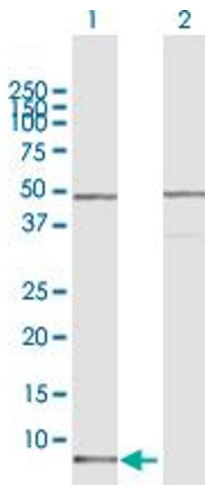
Application Details

Application Notes:	Optimal working dilution should be determined by the investigator.
Restrictions:	For Research Use only

Handling

Format:	Liquid
Buffer:	No additive
Preservative:	Without preservative
Handling Advice:	Aliquot to avoid repeated freezing and thawing.
Storage:	-20 °C
Storage Comment:	Store at -20°C or lower. Aliquot to avoid repeated freezing and thawing.

Images

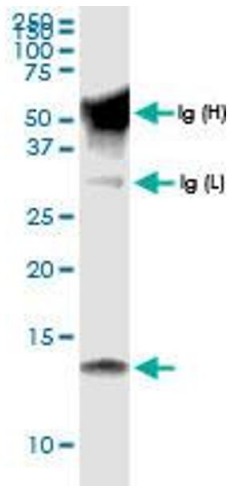


Western Blotting

Image 1. Western Blot analysis of CCL15 expression in transfected 293T cell line by CCL15 MaxPab polyclonal antibody.

Lane 1: CCL15 transfected lysate(12.20 KDa).

Lane 2: Non-transfected lysate.



Immunoprecipitation

Image 2. Immunoprecipitation of CCL15 transfected lysate using anti-CCL15 MaxPab rabbit polyclonal antibody and Protein A Magnetic Bead , and immunoblotted with CCL15 MaxPab rabbit polyclonal antibody (D01) .