



[Go to Product page](#)

Datasheet for ABIN948451

anti-Syndecan 2 antibody (AA 19-201)

1 Image

2 Publications

Overview

| | |
|----------------------|---|
| Quantity: | 50 µg |
| Target: | Syndecan 2 (SDC2) |
| Binding Specificity: | AA 19-201 |
| Reactivity: | Human |
| Host: | Mouse |
| Clonality: | Polyclonal |
| Conjugate: | This Syndecan 2 antibody is un-conjugated |
| Application: | Western Blotting (WB) |

Product Details

| | |
|-------------------|--|
| Purpose: | Mouse polyclonal antibody raised against a full-length human SDC2 protein. |
| Immunogen: | SDC2 (NP_002989.2, 19 a.a. ~ 201 a.a) full-length human protein. |
| Sequence: | ESRAELTSDK DMYLDNSSIE EASGVYPIDD DDYASASGSG ADEDVESPEL TTTRPLPKIL L TSAAPKVET TTLNIQNKIP AQTKSPEETD KEKVHLS DSE RKMDPAEEDT N VYTEKHSDS L FKRTEVLAA VIAGGVIGFL FAIFLILLV YRMRKKDEGS YDLGERKPSS AAYQKAPTKE FYA |
| Cross-Reactivity: | Human |
| Characteristics: | Antibody reactive against mammalian transfected lysate. |

Target Details

| | |
|---------|-------------------|
| Target: | Syndecan 2 (SDC2) |
|---------|-------------------|

Target Details

| | |
|-------------------|--|
| Alternative Name: | SDC2 (SDC2 Products) |
| Background: | Full Gene Name: syndecan 2 Synonyms: HSPG,HSPG1,SYND2 |
| Gene ID: | 6383 |
| NCBI Accession: | NM_002998 |
| Pathways: | Glycosaminoglycan Metabolic Process |

Application Details

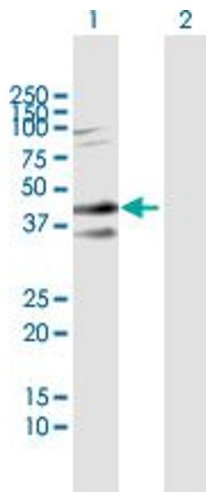
| | |
|--------------------|--|
| Application Notes: | Optimal working dilution should be determined by the investigator. |
| Restrictions: | For Research Use only |

Handling

| | |
|------------------|--|
| Buffer: | In 1x PBS, pH 7.4 |
| Handling Advice: | Aliquot to avoid repeated freezing and thawing. |
| Storage: | -20 °C |
| Storage Comment: | Store at -20°C or lower. Aliquot to avoid repeated freezing and thawing. |

Publications

| | |
|-------------------|--|
| Product cited in: | Lim, Multhaupt, Couchman: "Cell surface heparan sulfate proteoglycans control adhesion and invasion of breast carcinoma cells." in: Molecular cancer , Vol. 14, Issue 1, pp. 15, (2015) (PubMed). |
| | Lim, Couchman: "Syndecan-2 regulation of morphology in breast carcinoma cells is dependent on RhoGTPases." in: Biochimica et biophysica acta , Vol. 1840, Issue 8, pp. 2482-90, (2014) (PubMed). |



Western Blotting

Image 1. Western Blot analysis of SDC2 expression in transfected 293T cell line by SDC2 MaxPab polyclonal antibody.

Lane 1: SDC2 transfected lysate(20.13 KDa).

Lane 2: Non-transfected lysate.