



[Go to Product page](#)

Datasheet for ABIN948459

## anti-SFTPD antibody (AA 1-375)

### 1 Image

#### Overview

Quantity:	100 µg
Target:	SFTPD
Binding Specificity:	AA 1-375
Reactivity:	Human
Host:	Rabbit
Clonality:	Polyclonal
Conjugate:	This SFTPD antibody is un-conjugated
Application:	Western Blotting (WB)

#### Product Details

Purpose:	Rabbit polyclonal antibody raised against a full-length human SFTPD protein.
Immunogen:	SFTPD (AAH22318.1, 1 a.a. ~ 375 a.a) full-length human protein.
Sequence:	MLLFLLSALV LLTQPLGYLE AGMKTYSHRT MPSACTLVMC SSVESGLPGR DGRDGGREGPR GEKGDPLPG AAGQAGMPGQ AGPVGPKGDN GSVGEPGPKG DTGSPGPPGP PGVPGPAGRE GPLGKQGNIG PQGKPGPKGE AGPKGEVGAP GMQGSAGARG LAGPKGERGV PGERGVPGNT GAAGSAGAMG PQGSPGARGP PGLKGDKGIP GDKGAKGESG LPDVASLRQQ VEALQGQVQH LQAQFSQYKK VELFPNGQSV GEKIFKTAGF VKPFTEAQLL CTQAGGQLAS PRSAAENAAL QQLVVAKNEA AFLSMTDSKT EGKFTYPTGE SLVYSNWAPG KPNDGGSED CVEIFTNGKW NDRACGEKRL VVCEF
Cross-Reactivity:	Human
Characteristics:	Antibody reactive against mammalian transfected lysate.

## Target Details

Target:	SFTPD
Alternative Name:	SFTPD ( <a href="#">SFTPD Products</a> )
Background:	Full Gene Name: surfactant protein D Synonyms: COLEC7,PSP-D,SFTP4,SP-D
Gene ID:	6441

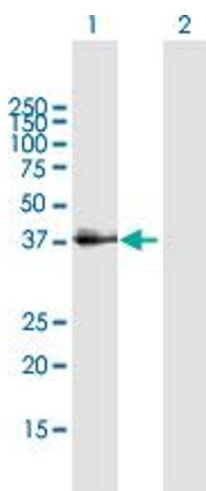
## Application Details

Application Notes:	Optimal working dilution should be determined by the investigator.
Restrictions:	For Research Use only

## Handling

Buffer:	In 1x PBS, pH 7.4
Handling Advice:	Aliquot to avoid repeated freezing and thawing.
Storage:	-20 °C
Storage Comment:	Store at -20°C or lower. Aliquot to avoid repeated freezing and thawing.

## Images



### Western Blotting

**Image 1.** Western Blot analysis of SFTPD expression in transfected 293T cell line by SFTPD MaxPab polyclonal antibody.

Lane 1: SFTPD transfected lysate(37.70 KDa).

Lane 2: Non-transfected lysate.