



Datasheet for ABIN948469 anti-SKIL antibody (AA 1-684)



[Go to Product page](#)

1 Image

Overview

Quantity:	50 µg
Target:	SKIL
Binding Specificity:	AA 1-684
Reactivity:	Human
Host:	Mouse
Clonality:	Polyclonal
Conjugate:	This SKIL antibody is un-conjugated
Application:	Western Blotting (WB)

Product Details

Purpose:	Mouse polyclonal antibody raised against a full-length human SKIL protein.
Immunogen:	SKIL (NP_005405.1, 1 a.a. ~ 684 a.a) full-length human protein.
Sequence:	MENLQTNFSL VQGSTKKLNG MGDDGSPPAK KMITDIHVNG KTINKVPTVK KEHLDDYGEA PVETDGEHVK RTCTSVPETL HLNPSLKHTL AQFHLSSQSS LGGPAAFSAR HSQESMSPTV FLPLPSPQVL PGPLLIPSDS STELTQTVLE GESISCFQVG GEKRLCLPQV LNSVLREFTL QQINTVCDL YIYCSRCTSD QLHILKVLGI LPFNAPSCGL ITLTDAQRLC NALLRPRTFP QNGSVLPAKS SLAQLKETGS AFEVEHECLG KCQGLFAPQF YVQPDAPCIQ CLECCGMFAP QTFVMHSHRS PDKRTCHWGF ESAKWHCYLH VNQKYLGTPE EKCLKIILEE MKEKFSMRSG KRNQSKTDAP SGMELQSWYP VIKQEGDHVS QTHSFLHPSY YLYMCDKVVVA PNVSLTSAVS QSKELTKTEA SKSISRQSEK AHSSGKLQKT VSYPDVSLEE QEKMDLKTSR ELCSRLDASI SNNSTSKRKS ESATCNLVRD INKVGIGLVA AASSPLLVKD VICEDDKGKI MEEVMRTYLK QQEKLNLILQ KKQQLQMEVK MLSSSKSMKE LTEEQQNLQK ELESQNEHA QRMEEFYVEQ

Product Details

KDLEKKLEQI MKQKCTCDNSN LEKDKEAEYA GQLAELRQRL DHAADRQEL QDELQRQEA
RQKLEMMIKE LKLQILKSSK TAKE

Cross-Reactivity: Human

Characteristics: Antibody reactive against mammalian transfected lysate.

Target Details

Target: SKIL

Alternative Name: SKIL ([SKIL Products](#))

Background: Full Gene Name: SKI-like oncogene

Synonyms: SNO,SnoA,SnoN

Gene ID: 6498

NCBI Accession: [NM_005414](#)

Pathways: [Positive Regulation of Response to DNA Damage Stimulus](#)

Application Details

Application Notes: Optimal working dilution should be determined by the investigator.

Restrictions: For Research Use only

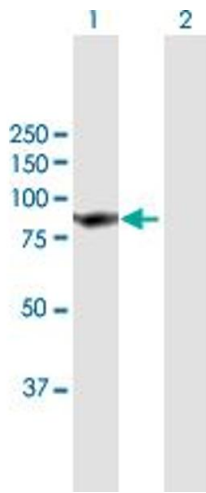
Handling

Buffer: In 1x PBS, pH 7.4

Handling Advice: Aliquot to avoid repeated freezing and thawing.

Storage: -20 °C

Storage Comment: Store at -20°C or lower. Aliquot to avoid repeated freezing and thawing.



Western Blotting

Image 1. Western Blot analysis of SKIL expression in transfected 293T cell line by SKIL MaxPab polyclonal antibody.

Lane 1: SKIL transfected lysate(75.24 KDa).

Lane 2: Non-transfected lysate.