



[Go to Product page](#)

Datasheet for ABIN948470

anti-SLC2A5 antibody (AA 1-501)

1 Image

Overview

Quantity:	50 µg
Target:	SLC2A5
Binding Specificity:	AA 1-501
Reactivity:	Human
Host:	Mouse
Clonality:	Polyclonal
Conjugate:	This SLC2A5 antibody is un-conjugated
Application:	Western Blotting (WB)

Product Details

Purpose:	Mouse polyclonal antibody raised against a full-length human SLC2A5 protein.
Immunogen:	SLC2A5 (NP_003030.1, 1 a.a. ~ 501 a.a) full-length human protein.
Sequence:	MEQQDQSMKE GRLTLVLALA TLIAAFGSSF QYGYNVAAVN SPALLMQQFY NETYYGRTGE FMEDFPLTLL WSVTVSMFPF GGFIGSLLVG PLVNFGRKG ALLFNNIFSI VPAILMGCSR VATSFELIII SRLLVGICAG VSSNVPMYL GELAPKNLRG ALGVVPQLFI TVGILVAQIF GLRNLLANVD GWPILLGLTG VPAALQLLLL PFFPESPRYL LIQKKDEAAA KKALQTLRGW DSVDREVAEI RQEDEAEKAA GFISVLKLFMRSLRWQLLS IIVLMGGQQL SGVNAIYYA DQIYLSAGVP EEHVQYVTAG TGAVNVMTF CAVFVVELLG RRLLLLLGFS ICLIAACVLT AALALQDVS WMPYISIVCV ISYVIGHALG PSPIPALLIT EIFLQSSRPS AFMVGGSVHW LSNFTVGLIF PFIQEGLGPY SFIVFAVICL LTTIYIFLIV PETKAKTFIE INQIFTKMNK VSEVYPEKEE LKELPPVTSE Q

Product Details

Cross-Reactivity:	Human
Characteristics:	Antibody reactive against mammalian transfected lysate.

Target Details

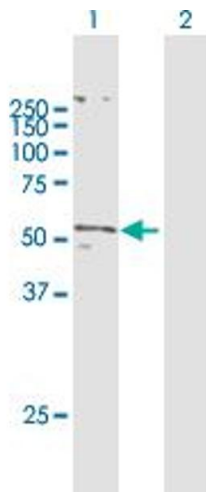
Target:	SLC2A5
Alternative Name:	SLC2A5 (SLC2A5 Products)
Background:	Full Gene Name: solute carrier family 2 (facilitated glucose/fructose transporter), member 5 Synonyms: GLUT5
Gene ID:	6518
NCBI Accession:	NM_003039

Application Details

Application Notes:	Optimal working dilution should be determined by the investigator.
Restrictions:	For Research Use only

Handling

Buffer:	In 1x PBS, pH 7.4
Handling Advice:	Aliquot to avoid repeated freezing and thawing.
Storage:	-20 °C
Storage Comment:	Store at -20°C or lower. Aliquot to avoid repeated freezing and thawing.



Western Blotting

Image 1. Western Blot analysis of SLC2A5 expression in transfected 293T cell line by SLC2A5 MaxPab polyclonal antibody.

Lane 1: SLC2A5 transfected lysate(55.11 KDa).

Lane 2: Non-transfected lysate.