



[Go to Product page](#)

Datasheet for ABIN948478

anti-SMN2 antibody (AA 1-282)

3 Images

Overview

Quantity:	50 µg
Target:	SMN2
Binding Specificity:	AA 1-282
Reactivity:	Human
Host:	Mouse
Clonality:	Polyclonal
Conjugate:	This SMN2 antibody is un-conjugated
Application:	Western Blotting (WB), Immunofluorescence (IF)

Product Details

Purpose:	Mouse polyclonal antibody raised against a full-length human SMN2 protein.
Immunogen:	SMN2 (NP_075013.1, 1 a.a. ~ 282 a.a) full-length human protein.
Sequence:	MAMSSGGSGG GVPEQEDSVL FRRGTGQSDD SDIWDDTALI KAYDKAVASF KHALKNGDIC ETSGKPKTTP KRKPAKKNS QKKNTAASLQ QWKVGDKCSA IWSEDGCIYP ATIASIDFKR ETCVVYTYG GNREEQNLSD LLSPICEVAN NIEQNAQENE NESQVSTDES ENSRSPGNKS DNIKPKSAPW NSFLPPPPPM PGPRLGPGKP GLKFNGPPPP PPPPPHLLS CWLPPFPSPG PIPPPPPIC PDSLDDADAL GSMLISWYMS GYHTGYMEM LA
Cross-Reactivity:	Human
Characteristics:	Antibody reactive against mammalian transfected lysate.

Target Details

Target:	SMN2
Alternative Name:	SMN2 (SMN2 Products)
Background:	Full Gene Name: survival of motor neuron 2, centromeric Synonyms: BCD541,C-BCD541,FLJ76644,MGC20996,MGC5208,SMNC
Gene ID:	6607
NCBI Accession:	NM_022875
Pathways:	Ribonucleoprotein Complex Subunit Organization

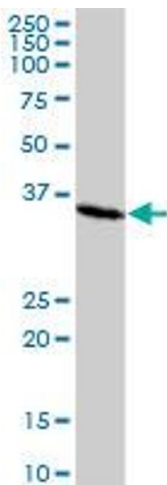
Application Details

Application Notes:	Optimal working dilution should be determined by the investigator.
Restrictions:	For Research Use only

Handling

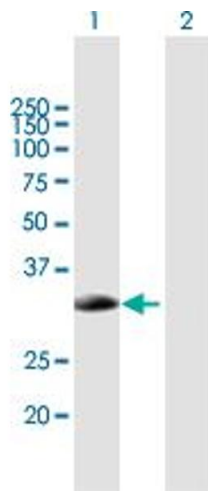
Buffer:	In 1x PBS, pH 7.4
Handling Advice:	Aliquot to avoid repeated freezing and thawing.
Storage:	-20 °C
Storage Comment:	Store at -20°C or lower. Aliquot to avoid repeated freezing and thawing.

Images



Western Blotting

Image 1. SMN2 MaxPab polyclonal antibody. Western Blot analysis of SMN2 expression in human kidney.

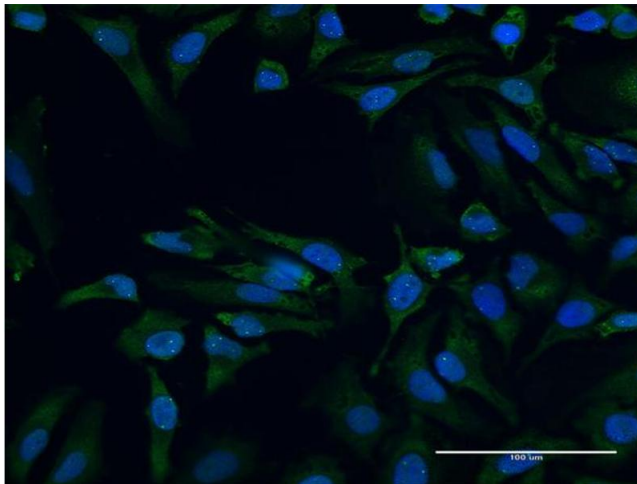


Western Blotting

Image 2. Western Blot analysis of SMN2 expression in transfected 293T cell line by SMN2 MaxPab polyclonal antibody.

Lane 1: SMN2 transfected lysate(31.02 KDa).

Lane 2: Non-transfected lysate.



Immunofluorescence

Image 3. Immunofluorescence of purified MaxPab antibody to SMN2 on HeLa cell. [antibody concentration 10 ug/ml]