



[Go to Product page](#)

Datasheet for ABIN948480
anti-SMN2 antibody (AA 1-282)

1 Image

Overview

Quantity:	100 µL
Target:	SMN2
Binding Specificity:	AA 1-282
Reactivity:	Human
Host:	Rabbit
Clonality:	Polyclonal
Conjugate:	This SMN2 antibody is un-conjugated
Application:	Immunoprecipitation (IP)

Product Details

Purpose:	Rabbit polyclonal antibody raised against a full-length human SMN2 protein.
Immunogen:	SMN2 (NP_075013.1, 1 a.a. ~ 282 a.a) full-length human protein.
Sequence:	MAMSSGGSGG GVPEQEDSVL FRRGTGQSDD SDIWDDTALI KAYDKAVASF KHALKNGDIC ETSGKPKTTP KRKPAKKNKS QKKNTAASLQ QWKVGDKCSA IWSEDGCIYP ATIASIDFKR ETCVVYTYG GNREEQNLSD LLSPICEVAN NIEQNAQENE NESQVSTDES ENSRSPGNKS DNIKPKSAPW NSFLPPPPPM PGPRLGPGKP GLKFNGPPPP PPPPPHLLS CWLPPFPSPG PIPPPPPIC PDSLDDADAL GSMLISWYMS GYHTGYMEM LA
Cross-Reactivity:	Human
Characteristics:	Antibody reactive against mammalian transfected lysate.

Target Details

Target:	SMN2
Alternative Name:	SMN2 (SMN2 Products)
Background:	Full Gene Name: survival of motor neuron 2, centromeric Synonyms: BCD541,C-BCD541,FLJ76644,MGC20996,MGC5208,SMNC
Gene ID:	6607
NCBI Accession:	NM_022875
Pathways:	Ribonucleoprotein Complex Subunit Organization

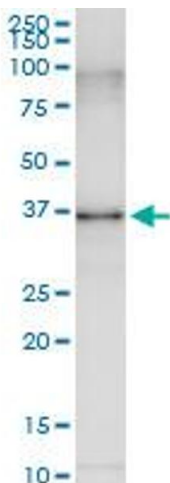
Application Details

Application Notes:	Optimal working dilution should be determined by the investigator.
Restrictions:	For Research Use only

Handling

Format:	Liquid
Buffer:	No additive
Preservative:	Without preservative
Handling Advice:	Aliquot to avoid repeated freezing and thawing.
Storage:	-20 °C
Storage Comment:	Store at -20°C or lower. Aliquot to avoid repeated freezing and thawing.

Images



Immunoprecipitation

Image 1. Immunoprecipitation of SMN2 transfected lysate using anti-SMN2 MaxPab rabbit polyclonal antibody and Protein A Magnetic Bead , and immunoblotted with SMN2 purified MaxPab mouse polyclonal antibody (B01P) .