

Datasheet for ABIN948490
anti-SOD1 antibody (AA 1-154)



[Go to Product page](#)

4 Images

Overview

Quantity:	100 µg
Target:	SOD1
Binding Specificity:	AA 1-154
Reactivity:	Human
Host:	Mouse
Clonality:	Monoclonal
Conjugate:	This SOD1 antibody is un-conjugated
Application:	Western Blotting (WB), ELISA, Immunofluorescence (IF)

Product Details

Purpose:	Mouse monoclonal antibody raised against a full-length recombinant SOD1.
Immunogen:	SOD1 (AAH01034, 1 a.a. ~ 154 a.a) full-length recombinant protein with GST tag. MW of the GST tag alone is 26 KDa.
Sequence:	MATKAVCVLK GDGPVQGIIN FEQKESNGPV KVWGSIKGLT EGLHGFHVHE FGDNTAGCTS AGPHFNPLSR KHGGPKDEER HVGDLGNVTA DKDGVADVSI EDSVISLSGD HCITGRTLWV HEKADDLGKG GNEESTKTGN AGSRLACGVI GIAQ
Clone:	10D5
Isotype:	IgG2a
Cross-Reactivity:	Human
Characteristics:	Antibody Reactive Against Recombinant Protein.

Target Details

Target:	SOD1
Alternative Name:	SOD1 (SOD1 Products)
Background:	Full Gene Name: superoxide dismutase 1, soluble Synonyms: ALS,ALS1,IPOA,SOD,homodimer
Gene ID:	6647
Pathways:	Sensory Perception of Sound , Transition Metal Ion Homeostasis

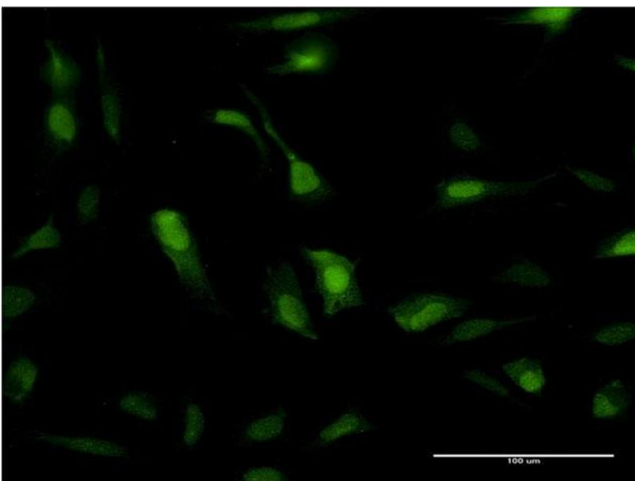
Application Details

Application Notes:	Optimal working dilution should be determined by the investigator.
Restrictions:	For Research Use only

Handling

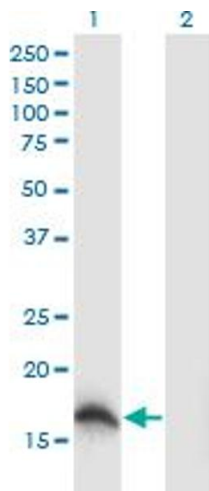
Buffer:	In 1x PBS, pH 7.4
Handling Advice:	Aliquot to avoid repeated freezing and thawing.
Storage:	-20 °C
Storage Comment:	Store at -20°C or lower. Aliquot to avoid repeated freezing and thawing.

Images



Immunofluorescence

Image 1. Immunofluorescence of monoclonal antibody to SOD1 on HeLa cell. [antibody concentration 10 µg/ml]

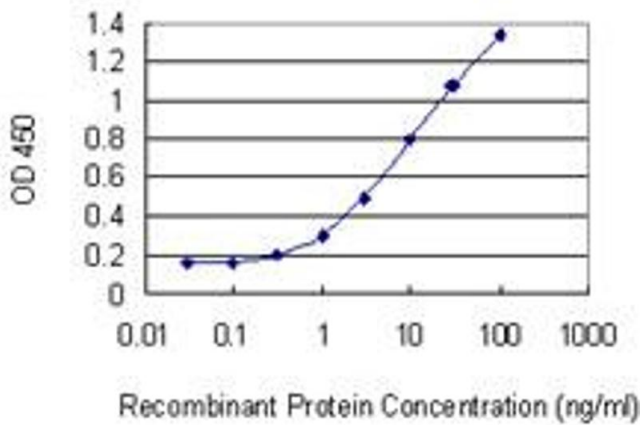


Western Blotting

Image 2. Western Blot analysis of SOD1 expression in transfected 293T cell line by SOD1 monoclonal antibody (M04), clone 10D5.

Lane 1: SOD1 transfected lysate (Predicted MW: 15.9 kDa).

Lane 2: Non-transfected lysate.



ELISA

Image 3. Detection limit for recombinant GST tagged SOD1 is 0.1 ng/ml as a capture antibody.

Please check the [product details page](#) for more images. Overall 4 images are available for ABIN948490.