

Datasheet for ABIN948499
anti-SPRR2F antibody (AA 1-72)



[Go to Product page](#)

3 Images

Overview

Quantity:	100 µg
Target:	SPRR2F
Binding Specificity:	AA 1-72
Reactivity:	Human
Host:	Mouse
Clonality:	Monoclonal
Conjugate:	This SPRR2F antibody is un-conjugated
Application:	ELISA, Western Blotting (WB)

Product Details

Purpose:	Mouse monoclonal antibody raised against a full-length recombinant SPRR2F.
Immunogen:	SPRR2F (NP_001014450.1, 1 a.a. ~ 72 a.a) full-length recombinant protein with GST tag. MW of the GST tag alone is 26 KDa.
Sequence:	MSYQQQCKQ PCQPPVCPA PKCPEPCPPP KCPEPCPPSK CPQSCPPQQC QKCPPVTPS PPCQPKCPPK SK
Clone:	5A9
Isotype:	IgG1
Cross-Reactivity:	Human
Characteristics:	Antibody Reactive Against Recombinant Protein.

Target Details

Target:	SPRR2F
Alternative Name:	SPRR2F (SPRR2F Products)
Background:	Full Gene Name: small proline-rich protein 2F Synonyms:
Gene ID:	6705
NCBI Accession:	NM_001014450

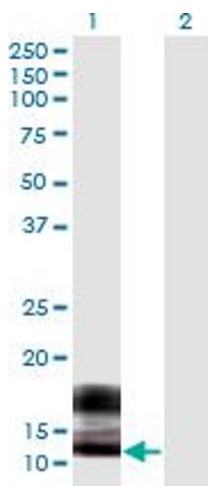
Application Details

Application Notes:	Optimal working dilution should be determined by the investigator.
Restrictions:	For Research Use only

Handling

Buffer:	In 1x PBS, pH 7.4
Handling Advice:	Aliquot to avoid repeated freezing and thawing.
Storage:	-20 °C
Storage Comment:	Store at -20°C or lower. Aliquot to avoid repeated freezing and thawing.

Images

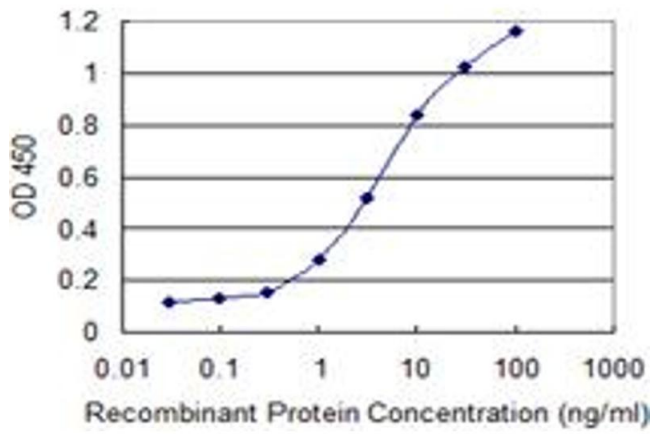


Western Blotting

Image 1. Western Blot analysis of SPRR2F expression in transfected 293T cell line by SPRR2F monoclonal antibody (M03), clone 5A9.

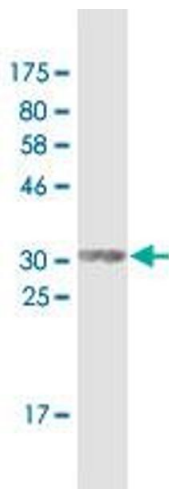
Lane 1: SPRR2F transfected lysate(7.8 kDa).

Lane 2: Non-transfected lysate.



ELISA

Image 2. Detection limit for recombinant GST tagged SPRR2F is 0.1 ng/ml as a capture antibody.



Western Blotting

Image 3. Western Blot detection against Immunogen (34.2 kDa).