

Datasheet for ABIN948503
anti-SRPR antibody (AA 1-638)



[Go to Product page](#)

3 Images

Overview

Quantity:	50 µg
Target:	SRPR
Binding Specificity:	AA 1-638
Reactivity:	Human
Host:	Mouse
Clonality:	Polyclonal
Conjugate:	This SRPR antibody is un-conjugated
Application:	Western Blotting (WB), Immunofluorescence (IF)

Product Details

Purpose:	Mouse polyclonal antibody raised against a full-length human SRPR protein.
Immunogen:	SRPR (NP_003130.2, 1 a.a. ~ 638 a.a) full-length human protein.
Sequence:	<p>MLDFFTIFSK GGLVLWCFQG VSDSCTGPVN ALIRSVLLQE RGGNNSFTHE ALTLKYKLDN QFELVFVVG F QKILTLTYVD KLIDDVHRLF RDKYRTEIQQ QSALSLLNGT FDFQNDFLRL LREAEESSKI RAPTTMKKFE DSEKAKKPVR SMIETRGEKP KEKAKNSKKK GAKKEGSDGP LATSKPVP AE KSGLPVGPEN GVELSKEELI RRKREEFIQK HGRGMEKSNK STKSDAPKEK GKKAPRVWEL GGCANKEVLD YSTPTTNGTP EAALSEDINL IRGTGSGGQL QDLDCSSDD EGAAQNSTKP SATKGT LGGM FGMLKGLVGS KLSLREDMES VLDKMRDHIL AKNVAADIAV QLCESVANKL EGKVMGT FST VTSTVKQALQ ESLVQILQPQ RRDVMDLRDIM DAQRRQRPPYV VTFCGVNGVG KSTNLAKISF WLENGFSVL IAACDTFRAG AVEQLRTHTR RLSALHPPEK HGGRTMVQLF EKGYGKDAAG IAMEAIAFAR NQGFVVLVD TAGRMQDNAP LMTALAKLIT VNTPDLVLFV GEALVGNEAV DQLVKFNRL ADHSMAQTPR LIDGIVLTKF DTIDDKVGAA</p>

Product Details

ISMITYITSKP IVFVGTGQTY CDLRSLNAKA VVAALMKA

Cross-Reactivity: Human

Characteristics: Antibody reactive against mammalian transfected lysate.

Target Details

Target: SRPR

Alternative Name: SRPR ([SRPR Products](#))

Background: Full Gene Name: signal recognition particle receptor (docking protein)
Synonyms: DP,MGC17355,MGC3650,MGC9571,SRP-alpha,Sralpha

Gene ID: 6734

NCBI Accession: [NM_003139](#)

Pathways: [ER-Nucleus Signaling](#)

Application Details

Application Notes: Optimal working dilution should be determined by the investigator.

Restrictions: For Research Use only

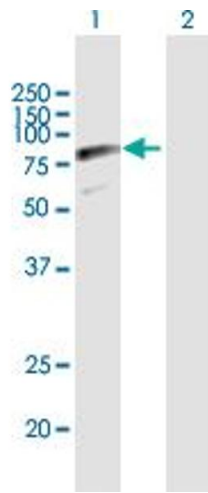
Handling

Buffer: In 1x PBS, pH 7.4

Handling Advice: Aliquot to avoid repeated freezing and thawing.

Storage: -20 °C

Storage Comment: Store at -20°C or lower. Aliquot to avoid repeated freezing and thawing.

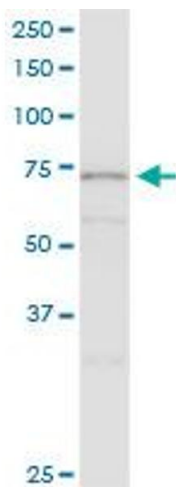


Western Blotting

Image 1. Western Blot analysis of SRPR expression in transfected 293T cell line by SRPR MaxPab polyclonal antibody.

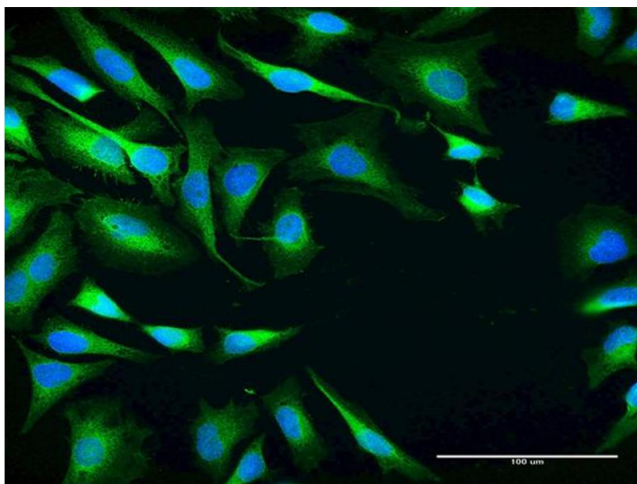
Lane 1: SRPR transfected lysate(69.80 KDa).

Lane 2: Non-transfected lysate.



Western Blotting

Image 2. SRPR MaxPab polyclonal antibody. Western Blot analysis of SRPR expression in human pancreas.



Immunofluorescence

Image 3. Immunofluorescence of purified MaxPab antibody to SRPR on HeLa cell. [antibody concentration 10 ug/ml]