



[Go to Product page](#)

Datasheet for ABIN948510  
**anti-STX1A antibody (AA 1-251)**

4 Images

Overview

Quantity:	50 µg
Target:	STX1A
Binding Specificity:	AA 1-251
Reactivity:	Human
Host:	Mouse
Clonality:	Polyclonal
Conjugate:	This STX1A antibody is un-conjugated
Application:	Western Blotting (WB), Immunohistochemistry (Paraffin-embedded Sections) (IHC (p))

Product Details

Purpose:	Mouse polyclonal antibody raised against a full-length human STX1A protein.
Immunogen:	STX1A (AAH03011.1, 1 a.a. ~ 251 a.a) full-length human protein.
Sequence:	MKDRTQELRT AKDSDDDDDDV AVTVDRDRFM DEFFEQVEEI RGFIDKIAEN VEEVKRKHSA ILASPNPDEK TKEELEELMS DIKKTANKVVR SKLKSIEQSI EQEEGLNRSS ADLRIRKTQH STLSRKFVEV MSEYNATQSD YRERCKGRIQ RQLEITGRIT TSEELEDMLE SGNPAIFASG IIMDSSISKQ ALSEIETRHS EIIKLENSIR ELHDMFMDMA MLVESQTMWR GPCLTPRRPS STRARRAGRK S
Cross-Reactivity:	Human
Characteristics:	Antibody reactive against mammalian transfected lysate.

## Target Details

Target:	STX1A
Alternative Name:	STX1A ( <a href="#">STX1A Products</a> )
Background:	Full Gene Name: syntaxin 1A (brain) Synonyms: HPC-1,STX1,p35-1
Gene ID:	6804
Pathways:	<a href="#">Peptide Hormone Metabolism</a> , <a href="#">Synaptic Membrane</a> , <a href="#">Synaptic Vesicle Exocytosis</a> , <a href="#">Dicarboxylic Acid Transport</a>

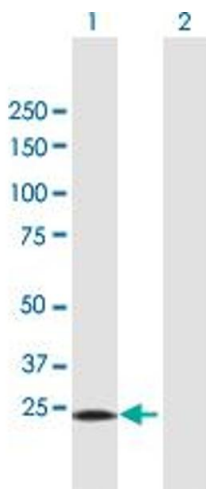
## Application Details

Application Notes:	Optimal working dilution should be determined by the investigator.
Restrictions:	For Research Use only

## Handling

Buffer:	In 1x PBS, pH 7.4
Handling Advice:	Aliquot to avoid repeated freezing and thawing.
Storage:	-20 °C
Storage Comment:	Store at -20°C or lower. Aliquot to avoid repeated freezing and thawing.

## Images

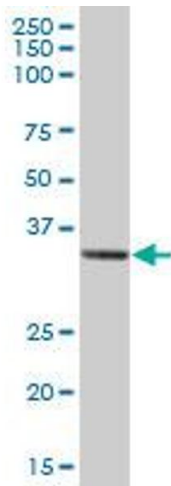


### Western Blotting

**Image 1.** Western Blot analysis of STX1A expression in transfected 293T cell line by STX1A MaxPab polyclonal antibody.

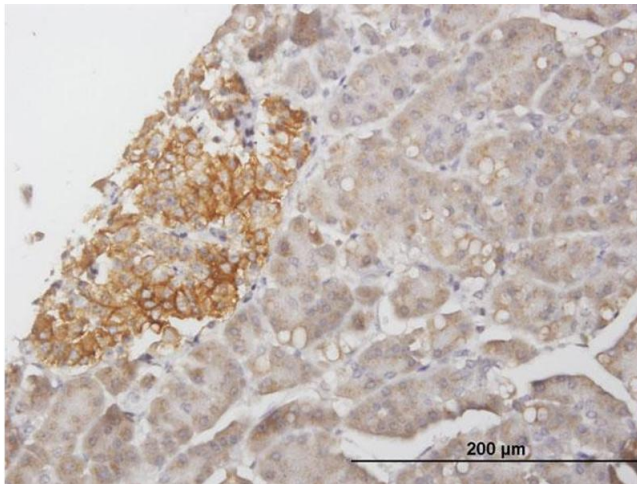
Lane 1: STX1A transfected lysate(27.61 KDa).

Lane 2: Non-transfected lysate.



### Western Blotting

**Image 2.** STX1A MaxPab polyclonal antibody. Western Blot analysis of STX1A expression in human kidney.



### Immunostaining

**Image 3.** Immunoperoxidase of purified MaxPab antibody to STX1A on formalin-fixed paraffin-embedded human pancreas. [antibody concentration 3 ug/ml]

Please check the [product details page](#) for more images. Overall 4 images are available for ABIN948510.