



[Go to Product page](#)

Datasheet for ABIN948540
anti-TRF2 antibody (AA 1-251)

1 Image

Overview

Quantity:	50 µg
Target:	TRF2 (TERF2)
Binding Specificity:	AA 1-251
Reactivity:	Human
Host:	Mouse
Clonality:	Polyclonal
Conjugate:	This TRF2 antibody is un-conjugated
Application:	Western Blotting (WB)

Product Details

Purpose:	Mouse polyclonal antibody raised against a full-length human TERF2 protein.
Immunogen:	TERF2 (AAH24890.1, 1 a.a. ~ 251 a.a) full-length human protein.
Sequence:	MAGGGGSSDG SGRAAGRAS RSSGRARRGR HEPGLGGPAE RGAGEARLEE AVNRWVLKFY FHEALRAFRG SRYGDFRQIR DIMQALLVRP LGKEHTVSRL LRVMQCLSRI EEGENLDCSF DMEAELTPLE SAINVLEMIK TEFTLTEAVV ESSRKLVKEA AVIICIKNKE FEKASKILKK HMSKDPTTQK LRNDLLNIIR EKNLAHPVIQ NFSYETFQQK MLRFLESHLD DAEPYLLTVR LGSPITMVC P
Cross-Reactivity:	Human
Characteristics:	Antibody reactive against mammalian transfected lysate.

Target Details

Target:	TRF2 (TERF2)
Alternative Name:	TERF2 (TERF2 Products)
Background:	Full Gene Name: telomeric repeat binding factor 2 Synonyms: TRBF2,TRF2
Gene ID:	7014
Pathways:	Cell Division Cycle , Telomere Maintenance

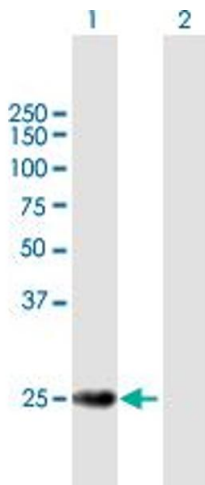
Application Details

Application Notes:	Optimal working dilution should be determined by the investigator.
Restrictions:	For Research Use only

Handling

Buffer:	In 1x PBS, pH 7.4
Handling Advice:	Aliquot to avoid repeated freezing and thawing.
Storage:	-20 °C
Storage Comment:	Store at -20°C or lower. Aliquot to avoid repeated freezing and thawing.

Images



Western Blotting

Image 1. Western Blot analysis of TERF2 expression in transfected 293T cell line by TERF2 MaxPab polyclonal antibody.

Lane 1: TERF2 transfected lysate(27.61 kDa).

Lane 2: Non-transfected lysate.