



[Go to Product page](#)

Datasheet for ABIN948541

## anti-TFCP2 antibody (AA 1-502)

### 3 Images

#### Overview

Quantity:	100 µL
Target:	TFCP2
Binding Specificity:	AA 1-502
Reactivity:	Human
Host:	Rabbit
Clonality:	Polyclonal
Conjugate:	This TFCP2 antibody is un-conjugated
Application:	Western Blotting (WB), Immunoprecipitation (IP)

#### Product Details

Purpose:	Rabbit polyclonal antibody raised against a full-length human TFCP2 protein.
Immunogen:	TFCP2 (NP_005644.2, 1 a.a. ~ 502 a.a) full-length human protein.
Sequence:	MAWALKLPLA DEVIESGLVQ DFDASLSGIG QELGAGAYSM SDVLALPIFK QEESLPPDN ENKILPFQYV LCAATSPAVK LHDETLTYLN QGQSYEIRML DNRKLGELPE INGKLVKSIF RVVFHDRRLQ YTEHQLEGW RWNRPDRL DIDIPMSVGI IDPRANPTQL NTVEFLWDPA KRTSVFIQVH CISTEFTMRK HGGEKGVPR VQIDTFKENE NGEYTEHLHS ASCQIKVFKP KGADRKQKTD REKMEKRTPH EKEYQPSYE TTILTECSPW PEITYVNNSP SPGFNSSHSS FSLGEGNGSP NHQPEPPPPV TDNLLPTTTP QEAQQLHRN RFSTFTRLFT NFSGADLLKL TRDDVIQICG PADGIRLFNA LKGRMVRPRL TIYVCQESLQ LREQQQQQQQ QQQKHEDGDS NGTFFVYHAI YLEELTAVEL TEKIAQLFSI SPCQISQIYK QGPTGIHVLI SDEMIQNFQE EACFILDTMK AETNDSYHII LK

## Product Details

---

Cross-Reactivity:	Human
Characteristics:	Antibody reactive against mammalian transfected lysate.

## Target Details

---

Target:	TFCP2
Alternative Name:	TFCP2 ( <a href="#">TFCP2 Products</a> )
Background:	Full Gene Name: transcription factor CP2 Synonyms: CP2,LBP-1C,LSF,SEF,TFCP2C
Gene ID:	7024
NCBI Accession:	<a href="#">NM_005653</a>

## Application Details

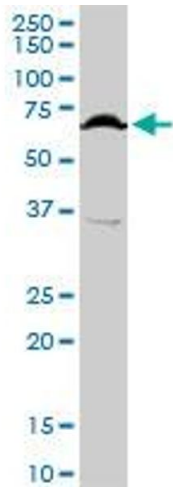
---

Application Notes:	Optimal working dilution should be determined by the investigator.
Restrictions:	For Research Use only

## Handling

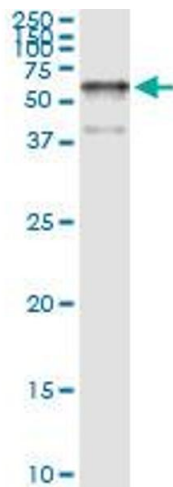
---

Format:	Liquid
Buffer:	No additive
Preservative:	Without preservative
Handling Advice:	Aliquot to avoid repeated freezing and thawing.
Storage:	-20 °C
Storage Comment:	Store at -20°C or lower. Aliquot to avoid repeated freezing and thawing.



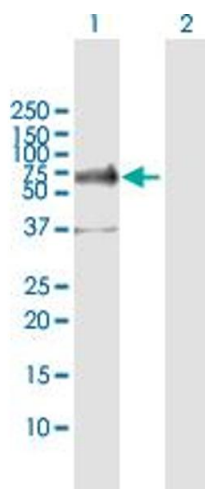
### Western Blotting

**Image 1.** TFCP2 MaxPab rabbit polyclonal antibody. Western Blot analysis of TFCP2 expression in HepG2.



### Immunoprecipitation

**Image 2.** Immunoprecipitation of TFCP2 transfected lysate using anti-TFCP2 MaxPab rabbit polyclonal antibody and Protein A Magnetic Bead, and immunoblotted with TFCP2 purified MaxPab mouse polyclonal antibody (B01P).



### Western Blotting

**Image 3.** Western Blot analysis of TFCP2 expression in transfected 293T cell line by TFCP2 MaxPab polyclonal antibody.

Lane 1: TFCP2 transfected lysate(57.30 KDa).

Lane 2: Non-transfected lysate.