



Datasheet for ABIN948552
anti-LEFTY2 antibody (AA 1-366)



[Go to Product page](#)

1 Image

Overview

| | |
|----------------------|---------------------------------------|
| Quantity: | 50 µg |
| Target: | LEFTY2 |
| Binding Specificity: | AA 1-366 |
| Reactivity: | Human |
| Host: | Mouse |
| Clonality: | Polyclonal |
| Conjugate: | This LEFTY2 antibody is un-conjugated |
| Application: | Western Blotting (WB) |

Product Details

| | |
|-------------------|--|
| Purpose: | Mouse polyclonal antibody raised against a full-length human LEFTY2 protein. |
| Immunogen: | LEFTY2 (NP_003231.2, 1 a.a. ~ 366 a.a) full-length human protein. |
| Sequence: | MWPLWLCWAL WVLPLAGPGA ALTEEQLLGS LLRQLQLSEV PVLDRADMEK LVIPAHVRAQ YVLLRRSHG DRSRGKRFSQ SFREVAGRFL ASEASTHLLV FGMEQRLPPN SELVQAVLRL FQEPVPKAAL HRHGRLSPRS AQARVTVEWL RVRDDGNSRT SLIDSRLVSV HESGWKAFDV TEAVNFWQQL SRPRQPLLLQ VSVQREHLGP LASGAHKLVR FASQGAPAGL GEPQLELHTL DLRDYGAQGD CDPEAPMTEG TRCCRQEMYI DLQGMKWAKN WVLEPPGFLA YECVGTCCQP PEALAFNWPFLGPRQCIASE TASLPMIVSI KEGGRTRPQV VSLPNMRVQK CSCASDGALV PRRLQP |
| Cross-Reactivity: | Human |
| Characteristics: | Antibody reactive against mammalian transfected lysate. |

Target Details

| | |
|-------------------|---|
| Target: | LEFTY2 |
| Alternative Name: | LEFTY2 (LEFTY2 Products) |
| Background: | Full Gene Name: left-right determination factor 2 Synonyms: EBAF,LEFTA,LEFTYA,MGC46222,TGFB4 |
| Gene ID: | 7044 |
| NCBI Accession: | NM_003240 |

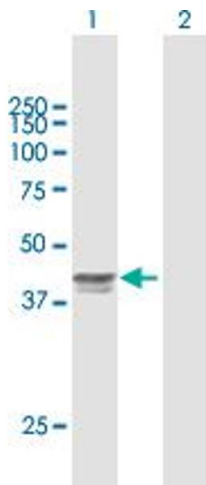
Application Details

| | |
|--------------------|--|
| Application Notes: | Optimal working dilution should be determined by the investigator. |
| Restrictions: | For Research Use only |

Handling

| | |
|------------------|--|
| Buffer: | In 1x PBS, pH 7.4 |
| Handling Advice: | Aliquot to avoid repeated freezing and thawing. |
| Storage: | -20 °C |
| Storage Comment: | Store at -20°C or lower. Aliquot to avoid repeated freezing and thawing. |

Images



Western Blotting

Image 1. Western Blot analysis of LEFTY2 expression in transfected 293T cell line by LEFTY2 MaxPab polyclonal antibody.

Lane 1: LEFTY2 transfected lysate(40.26 KDa).

Lane 2: Non-transfected lysate.