

Datasheet for ABIN948665  
**anti-MKKS antibody (AA 1-570)**



[Go to Product page](#)

1 Image

Overview

Quantity:	50 µg
Target:	MKKS
Binding Specificity:	AA 1-570
Reactivity:	Human
Host:	Mouse
Clonality:	Polyclonal
Conjugate:	This MKKS antibody is un-conjugated
Application:	Western Blotting (WB)

Product Details

Purpose:	Mouse polyclonal antibody raised against a full-length human MKKS protein.
Immunogen:	MKKS (NP_061336.1, 1 a.a. ~ 570 a.a) full-length human protein.
Sequence:	MSRLEAKKPS LCKSEPLTTE RVRTTLSVLK RIVTSCYGPS GRLKQLHNGF GGYVCTTSQS SALLSHLLVT HPILKILTAS IQNHVSSFSD CGLFTAILCC NLIENVQLRG LPTTTVIRLN KHLLSLCISY LKSETCGCRI PVDFSSTQIL LCLVRSILTS KPACMLTRKE TEHVSALILR AFLLTIPENA EGHIIIGKSL IVPLKGQRVI DSTVLPGILI EMSEVQLMRL LPIKKSTALK VALFCTTSLG DTSDTGEGTV VVSYGVSLEN AVLDQLNLG RQLISDHVDL VLCQKVIHPS LKQFLNMHRI IAIDRIGVTL MEPLTKMTGT QPIGSLGSIC PNSYGSVKDV CTAKFGSKHF FHLIPNEATI CSLLLCNRND TAWDELKLTC QTALHVLQLT LKEPWALLGG GCTETHLAAY IRHKTHNDPE SILKDDLECTQ TELQLIAEAF CSALESVVGSL LEHDGGEILT DMKYGHLWSV QADSPCVANW PDLLSQCGCG LYNSQEELNW SFLRSTRPFP VPQSCLPHEA VGSASNLTLT CLTAKLSGLQ VAVETANLIL DLSYVIEDKN

## Product Details

---

Cross-Reactivity:	Human
Characteristics:	Antibody reactive against mammalian transfected lysate.

## Target Details

---

Target:	MKKS
Alternative Name:	MKKS ( <a href="#">MKKS Products</a> )
Background:	Full Gene Name: McKusick-Kaufman syndrome Synonyms: BBS6, HMCS, KMS, MKS
Gene ID:	8195
NCBI Accession:	<a href="#">NM_018848</a>
Pathways:	<a href="#">Sensory Perception of Sound</a>

## Application Details

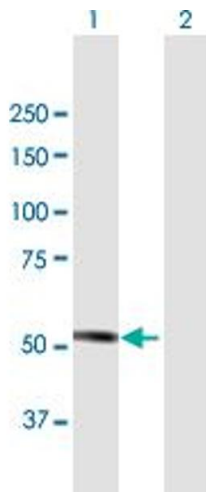
---

Application Notes:	Optimal working dilution should be determined by the investigator.
Restrictions:	For Research Use only

## Handling

---

Buffer:	In 1x PBS, pH 7.4
Handling Advice:	Aliquot to avoid repeated freezing and thawing.
Storage:	-20 °C
Storage Comment:	Store at -20°C or lower. Aliquot to avoid repeated freezing and thawing.



### Western Blotting

**Image 1.** Western Blot analysis of MKKS expression in transfected 293T cell line by MKKS MaxPab polyclonal antibody.

Lane 1: MKKS transfected lysate(62.7 KDa).

Lane 2: Non-transfected lysate.