

Datasheet for ABIN948706  
**anti-RRP1 antibody (AA 1-461)**



[Go to Product page](#)

3 Images

Overview

Quantity:	50 µg
Target:	RRP1
Binding Specificity:	AA 1-461
Reactivity:	Human
Host:	Mouse
Clonality:	Polyclonal
Conjugate:	This RRP1 antibody is un-conjugated
Application:	Western Blotting (WB), Immunofluorescence (IF)

Product Details

Purpose:	Mouse polyclonal antibody raised against a full-length human RRP1 protein.
Immunogen:	RRP1 (NP_003674.1, 1 a.a. ~ 461 a.a) full-length human protein.
Sequence:	MVSRVQLPPE IQLAQRLAGN EQVTRDRAVR KLRKYIVART QRAAGGFTHD ELLKVVWGLF YCMWMQDKPL LQEELGRTIS QLVHAFQTTE AQHLFLQAFW QTMNREWTGI DRLRLDKFYM LMRMVLNESL KVLKMQGWEE RQIEELLELL MTEILHPSSQ APNGVKSHFI EIFLEELTKV GAEELTADQN LKFIDPFCRI AARTKDSLVL NNITRGIFET IVEQAPLAIE DLLNELDTQD EEVASDSDS SEGGERGDAL SQKRSEKPPA GSICRAEPEA GEEQAGDDRD SGGPVLQFDY EAVANRLFEM ASRQSTPSQN RKRLYKVIK LQDLGGIFP EDEIPEKACR RLLEGRRQKK TTKQKRLRL QQERGKGEKE PPSPGMERKR SRRRGVGADP EARAEAGEQP GTAERALLRD QPRGRGQRGA RQRRRTPRPL TSARAKAANV QEPEKRRR E
Cross-Reactivity:	Human

## Product Details

Characteristics: Antibody reactive against mammalian transfected lysate.

## Target Details

Target: RRP1

Alternative Name: RRP1 ([RRP1 Products](#))

Background: Full Gene Name: ribosomal RNA processing 1 homolog (*S. cerevisiae*)  
Synonyms: D21S2056E,NNP-1,NOP52,RRP1A

Gene ID: 8568

NCBI Accession: [NM\\_003683](#)

## Application Details

Application Notes: Optimal working dilution should be determined by the investigator.

Restrictions: For Research Use only

## Handling

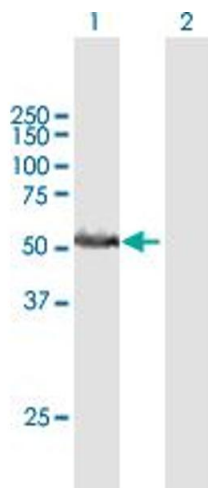
Buffer: In 1x PBS, pH 7.4

Handling Advice: Aliquot to avoid repeated freezing and thawing.

Storage: -20 °C

Storage Comment: Store at -20°C or lower. Aliquot to avoid repeated freezing and thawing.

## Images

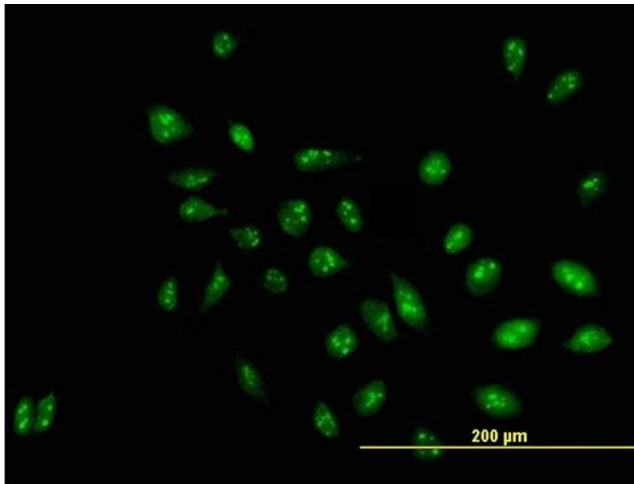


### Western Blotting

**Image 1.** Western Blot analysis of RRP1 expression in transfected 293T cell line by RRP1 MaxPab polyclonal antibody.

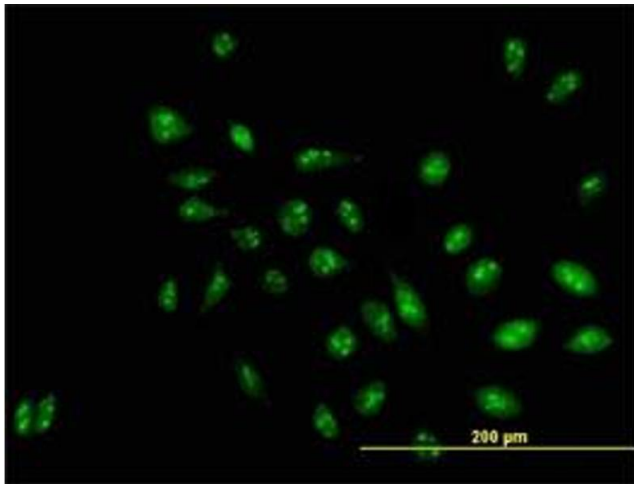
Lane 1: D21S2056E transfected lysate(50.71 KDa).

Lane 2: Non-transfected lysate.



#### Immunofluorescence

**Image 2.** Immunofluorescence of purified MaxPab antibody to D21S2056E on HeLa cell. [antibody concentration 10 ug/ml]



#### Immunofluorescence

**Image 3.** Immunofluorescence of purified MaxPab antibody to D21S2056E on HeLa cell. (antibody concentration 10 μg/mL)