



Datasheet for ABIN948712
anti-ASMTL antibody (AA 1-621)



[Go to Product page](#)

3 Images

Overview

Quantity:	100 µL
Target:	ASMTL
Binding Specificity:	AA 1-621
Reactivity:	Human
Host:	Rabbit
Clonality:	Polyclonal
Conjugate:	This ASMTL antibody is un-conjugated
Application:	Western Blotting (WB), Immunoprecipitation (IP)

Product Details

Purpose:	Rabbit polyclonal antibody raised against a full-length human ASMTL protein.
Immunogen:	ASMTL (AAH02508.1, 1 a.a. ~ 621 a.a) full-length human protein.
Sequence:	MVLCPVIGKL LHKRVVLSA SPRRQEILSN AGLRFEVPS KFKEKLDKAS FATPYGYAME TAKQKALEVA NRLYQKDLRA PDVVIGADTI VTVGGLILEK PVDKQDAYRM LSRLSGREHS VFTGVAIVHC SSKDHQLDTR VSEFYEETKV KFSELSEELL WEYVHSGEPM DKAGGYGIQA LGGMLVESVH GDFLNVVGFPLNHFKQLVK LYYPPRPEDL RRSVKHDSIP AADTFEDLSD VEGGGSEPTQ RDAGSRDEKA EAGEAGQATA EAECHRTRET LPPFPTRLLE LIEGFMLSKG LLTACKLKVF DLLKDEAPQK AADIASKVDA SACGMERLLD ICAAMG LLEK TEQGYSTET ANVYLASDGE YSLHGFIMHN NDLTWNLFY LEFAIREG TN QHHRALGKKA EDLFDAYYQ SPETRLRFMR AMHG MTKLTA CQVATAFNLS RFSSACDVGG CTGALARELA REYPRMQVTV FDLPDIIELA AHFQPPGPQA VQIHFAAGDF FRDPLPSAEL YVLCRILHDW PDDKVHKLLS KVAESCKPGA GLLL VETLLD EEKRVAQRAL MQSLNMLVQT EGKERSLGEY QCLLELHGFH

Product Details

QVQVVHLGGV LDAILATKVA P

Cross-Reactivity: Human

Characteristics: Antibody reactive against mammalian transfected lysate.

Target Details

Target: ASMTL

Alternative Name: ASMTL ([ASMTL Products](#))

Background: Full Gene Name: acetylserotonin O-methyltransferase-like
Synonyms: ASMTLX,ASMTLY,ASTML

Gene ID: 8623

Application Details

Application Notes: Optimal working dilution should be determined by the investigator.

Restrictions: For Research Use only

Handling

Format: Liquid

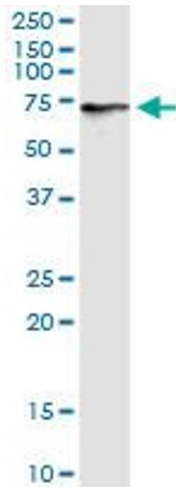
Buffer: No additive

Preservative: Without preservative

Handling Advice: Aliquot to avoid repeated freezing and thawing.

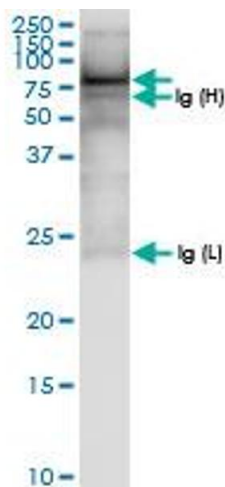
Storage: -20 °C

Storage Comment: Store at -20°C or lower. Aliquot to avoid repeated freezing and thawing.



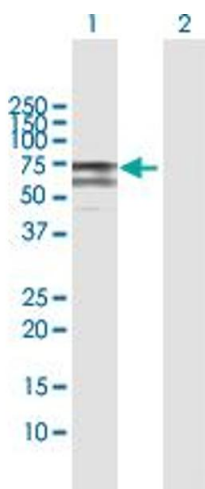
Western Blotting

Image 1. ASMTL MaxPab rabbit polyclonal antibody. Western Blot analysis of ASMTL expression in human liver.



Immunoprecipitation

Image 2. Immunoprecipitation of ASMTL transfected lysate using anti-ASMTL MaxPab rabbit polyclonal antibody and Protein A Magnetic Bead , and immunoblotted with ASMTL MaxPab rabbit polyclonal antibody (D01) .



Western Blotting

Image 3. Western Blot analysis of ASMTL expression in transfected 293T cell line by ASMTL MaxPab polyclonal antibody.

Lane 1: ASMTL transfected lysate(68.80 KDa).

Lane 2: Non-transfected lysate.