



[Go to Product page](#)

Datasheet for ABIN948726

anti-PAGE1 antibody (AA 1-146)

3 Images

Overview

Quantity:	100 µg
Target:	PAGE1
Binding Specificity:	AA 1-146
Reactivity:	Human
Host:	Mouse
Clonality:	Monoclonal
Conjugate:	This PAGE1 antibody is un-conjugated
Application:	Western Blotting (WB), ELISA

Product Details

Purpose:	Mouse monoclonal antibody raised against a full-length recombinant PAGE1.
Immunogen:	PAGE1 (NP_003776.2, 1 a.a. ~ 146 a.a) full-length recombinant protein with GST tag. MW of the GST tag alone is 26 KDa.
Sequence:	MGFLRRLIYR RRPMIYVESS EESSDEQPDE VESPTQSQDS TPAEEREDEG ASAAQQQEPE ADSQELVQPK TGCELDGDPD TKRVCLRNEE QMKLPAEGPE PEADSQEQVH PKTGGERGDG PDVQELGLPN PEEVKTP EED EGQSQP
Clone:	6G6
Isotype:	IgG2a
Cross-Reactivity:	Human
Characteristics:	Antibody Reactive Against Recombinant Protein.

Target Details

Target:	PAGE1
Alternative Name:	PAGE1 (PAGE1 Products)
Background:	Full Gene Name: P antigen family, member 1 (prostate associated) Synonyms: GAGE-9,GAGEB1,PAGE-1
Gene ID:	8712
NCBI Accession:	NM_003785

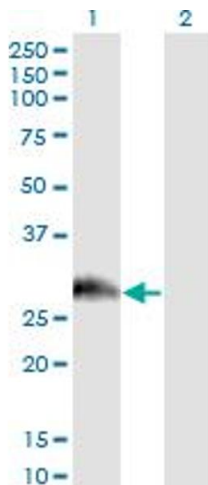
Application Details

Application Notes:	Optimal working dilution should be determined by the investigator.
Restrictions:	For Research Use only

Handling

Buffer:	In 1x PBS, pH 7.4
Handling Advice:	Aliquot to avoid repeated freezing and thawing.
Storage:	-20 °C
Storage Comment:	Store at -20°C or lower. Aliquot to avoid repeated freezing and thawing.

Images

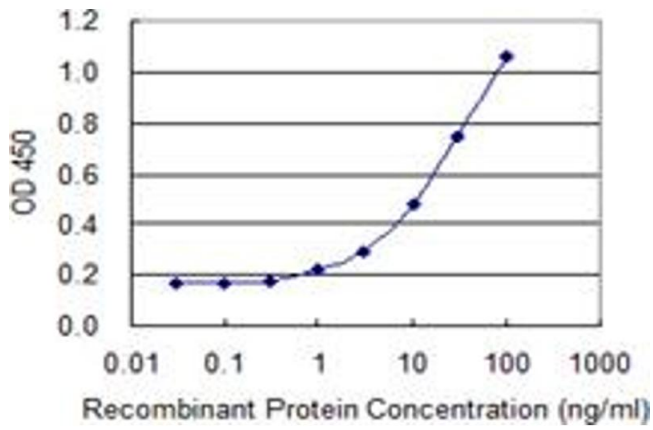


Western Blotting

Image 1. Western Blot analysis of PAGE1 expression in transfected 293T cell line by PAGE1 monoclonal antibody (M01), clone 6G6.

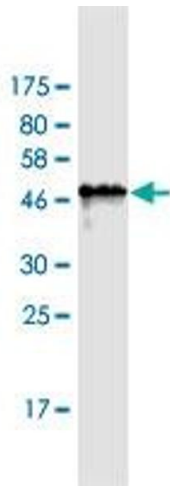
Lane 1: PAGE1 transfected lysate(16.2 KDa).

Lane 2: Non-transfected lysate.



ELISA

Image 2. Detection limit for recombinant GST tagged PAGE1 is 0.3 ng/ml as a capture antibody.



Western Blotting

Image 3. Western Blot detection against Immunogen (42.6 kDa).