



Datasheet for ABIN948761
anti-CCRL2 antibody (AA 1-344)



[Go to Product page](#)

1 Image

Overview

Quantity:	100 µg
Target:	CCRL2
Binding Specificity:	AA 1-344
Reactivity:	Human
Host:	Rabbit
Clonality:	Polyclonal
Conjugate:	This CCRL2 antibody is un-conjugated
Application:	Western Blotting (WB)

Product Details

Purpose:	Rabbit polyclonal antibody raised against a full-length human CCRL2 protein.
Immunogen:	CCRL2 (NP_003956.2, 1 a.a. ~ 344 a.a) full-length human protein.
Sequence:	MANYTLAPED EYDVLIEGEL ESDEAEQCDK YDAQALSAQL VPSLCSAVFV IGVDNLLVW LILVKYKGLK RVENIYLLNL AVSNLCFLLT LPFWAHAGGD PMCKILIGLY FVGLYSETFF NCLLTVQRYL VFLHKGNNFFS ARRRVPCGII TSVLAWVTAI LATLPEFVVY KPQMEDQKYK CAFSRTPFLP ADEFWKHFL TLKMNISVLV LPLFIFTFLY VQMRKTLRFR EQRYSLFKLV FAIMVVFLLM WAPYNIFFL STFKEHFSL S DCKSSYNLDK SVHITKLIAT THCCINPLLY AFLDGTFSKY LCRCFHLSN TPLQPRGQSA QGTSREEPDH STEV
Cross-Reactivity:	Human
Characteristics:	Antibody reactive against mammalian transfected lysate.

Target Details

Target:	CCRL2
Alternative Name:	CCRL2 (CCRL2 Products)
Background:	Full Gene Name: chemokine (C-C motif) receptor-like 2 Synonyms: CKRX,CRAM-A,CRAM-B,FLJ55815,HCR,MGC116710
Gene ID:	9034
NCBI Accession:	NM_003965

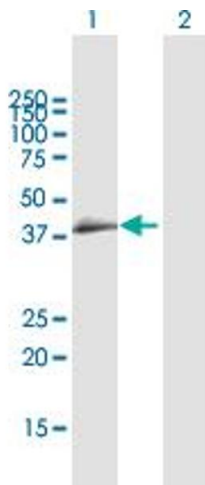
Application Details

Application Notes:	Optimal working dilution should be determined by the investigator.
Restrictions:	For Research Use only

Handling

Buffer:	In 1x PBS, pH 7.4
Handling Advice:	Aliquot to avoid repeated freezing and thawing.
Storage:	-20 °C
Storage Comment:	Store at -20°C or lower. Aliquot to avoid repeated freezing and thawing.

Images



Western Blotting

Image 1. Western Blot analysis of CCRL2 expression in transfected 293T cell line by CCRL2 MaxPab polyclonal antibody.

Lane 1: CCRL2 transfected lysate(39.5 KDa).

Lane 2: Non-transfected lysate.