

Datasheet for ABIN948795  
**anti-ZFYVE9 antibody (AA 1-762)**



[Go to Product page](#)

3 Images

Overview

Quantity:	100 µL
Target:	ZFYVE9
Binding Specificity:	AA 1-762
Reactivity:	Human
Host:	Rabbit
Clonality:	Polyclonal
Conjugate:	This ZFYVE9 antibody is un-conjugated
Application:	Western Blotting (WB), Immunoprecipitation (IP)

Product Details

Purpose:	Rabbit polyclonal antibody raised against a full-length human ZFYVE9 protein.
Immunogen:	ZFYVE9 (NP_015562.1, 1 a.a. ~ 762 a.a) full-length human protein.
Sequence:	MENYFQAEAY NLDKVLDEFE QNEDETVSST LLDTKWNKIL DPPSHRLSFN PTLASVNESA VSNESQPQLK VFSLAHSAPL TTEEEDHCAN GQDCNLNPEI ATMWIDENAV AEDQLIKRNY SWDDQCSAVE VGEKKCGNLA CLPDEKNVLV VAVMHNCDKR TLQNDLQDCN NYNSQSLMDA FSCSLDNENR QTDQFSFSIN ESTEKDMNSE KQMDPLNRPK TEGRSVNHL C PTSSDSLASV CSPSQLKDDG SIGRDPMSA ITSLTVDSVI SSQGTGCPA VKKQENYIPD EDLTGKISSP RTDLGSPNSF SHMSEGILMK KEPAEESTTE ESLRSGPLLL LKPDMPNGSG RNND CERCSD CLVPNEVRAD ENEGYEHEET LGTTEFLNMT EHFSESQDMT NWKLTCLNEM NDSQVNEEKE KFLQISQPED TNGDSGGQCV GLADAGLDLK GTCISESEEC DFSTVIDTPA ANYLSNGCDS YGMQDPGVSF VPKTLPSKED SVTEEKEIEE SKSECYSNIY EQRGNEATEG SGLLLNSTGD LMKKNYLHNF CSQVPSVLGQ SSPKVVASLP SISVPFGGAR PKQPSNLKLQ IPKPLSDHLQ

## Product Details

---

NDFPANSGNN TKNKNDILGK AKLGENSATN VCSPSLGNIS NVDTNGEHLE SYEAEISTRP  
CLALAPDSPD NDLRAGQFGI SARKPFTTLG EVAPVWVPDS QAPNCMKCEA RFTFTKRRHH  
CRACGKVFCA SCCSLKCKLL YMDRKEARVC VICHSVLMNG KY

Cross-Reactivity: Human

Characteristics: Antibody reactive against mammalian transfected lysate.

## Target Details

---

Target: ZFYVE9

Alternative Name: ZFYVE9 ([ZFYVE9 Products](#))

Background: Full Gene Name: zinc finger, FYVE domain containing 9  
Synonyms: MADHIP,NSP,SARA,SMADIP

Gene ID: 9372

NCBI Accession: [NM\\_007323](#)

Pathways: [Protein targeting to Nucleus](#)

## Application Details

---

Application Notes: Optimal working dilution should be determined by the investigator.

Restrictions: For Research Use only

## Handling

---

Format: Liquid

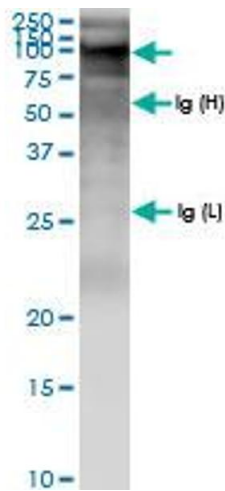
Buffer: No additive

Preservative: Without preservative

Handling Advice: Aliquot to avoid repeated freezing and thawing.

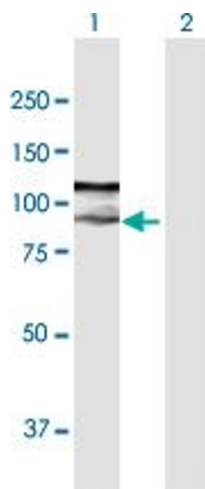
Storage: -20 °C

Storage Comment: Store at -20°C or lower. Aliquot to avoid repeated freezing and thawing.



### Immunoprecipitation

**Image 1.** Immunoprecipitation of ZFYVE9 transfected lysate using anti-ZFYVE9 MaxPab rabbit polyclonal antibody and Protein A Magnetic Bead , and immunoblotted with ZFYVE9 MaxPab rabbit polyclonal antibody (D01) .

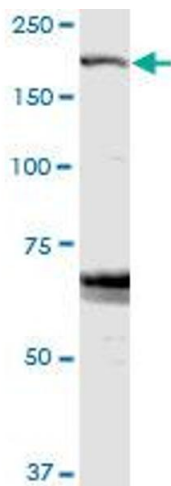


### Western Blotting

**Image 2.** Western Blot analysis of ZFYVE9 expression in transfected 293T cell line by ZFYVE9 MaxPab polyclonal antibody.

Lane 1: ZFYVE9 transfected lysate(83.70 KDa).

Lane 2: Non-transfected lysate.



### Western Blotting

**Image 3.** ZFYVE9 MaxPab rabbit polyclonal antibody. Western Blot analysis of ZFYVE9 expression in HeLa.