

Datasheet for ABIN948798
anti-Neurexin 1 antibody (AA 31-130)



[Go to Product page](#)

2 Images

Overview

| | |
|----------------------|---|
| Quantity: | 100 µg |
| Target: | Neurexin 1 (NRXN1) |
| Binding Specificity: | AA 31-130 |
| Reactivity: | Human |
| Host: | Mouse |
| Clonality: | Monoclonal |
| Conjugate: | This Neurexin 1 antibody is un-conjugated |
| Application: | Western Blotting (WB), ELISA |

Product Details

| | |
|-------------------|---|
| Purpose: | Mouse monoclonal antibody raised against a partial recombinant NRXN1. |
| Immunogen: | NRXN1 (NP_004792, 31 a.a. ~ 130 a.a) partial recombinant protein with GST tag. MW of the GST tag alone is 26 KDa. |
| Sequence: | LEFPGAEGQW TRFPKWNACC ESEMSFQLKT RSARGLVLYF DDEGFCDFLE LILTRGGRLQ LSFSIFCAEP ATLLADTPVN DGAWHSVRIR RQFRNTTLFI |
| Clone: | 4F7 |
| Isotype: | IgG2b |
| Cross-Reactivity: | Human |
| Characteristics: | Antibody Reactive Against Recombinant Protein. |

Target Details

| | |
|-------------------|---|
| Target: | Neurexin 1 (NRXN1) |
| Alternative Name: | NRXN1 (NRXN1 Products) |
| Background: | Full Gene Name: neurexin 1 Synonyms: DKFZp313P2036,FLJ35941,Hs.22998,KIAA0578 |
| Gene ID: | 9378 |
| NCBI Accession: | NM_004801 |
| Pathways: | Synaptic Membrane , Skeletal Muscle Fiber Development |

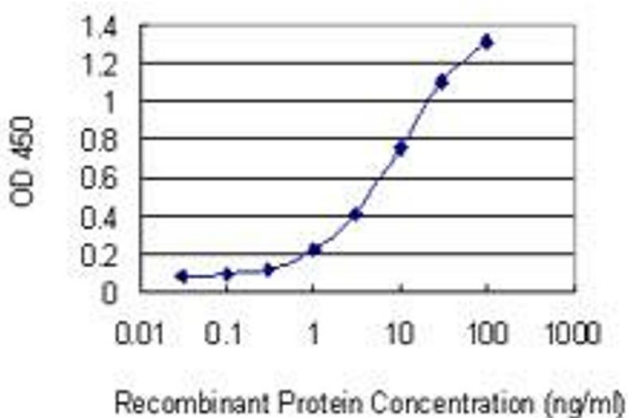
Application Details

| | |
|--------------------|--|
| Application Notes: | Optimal working dilution should be determined by the investigator. |
| Restrictions: | For Research Use only |

Handling

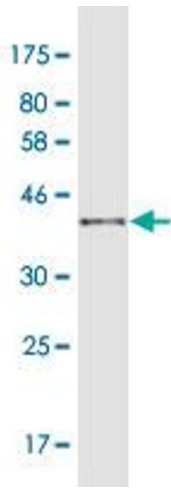
| | |
|------------------|--|
| Buffer: | In 1x PBS, pH 7.4 |
| Handling Advice: | Aliquot to avoid repeated freezing and thawing. |
| Storage: | -20 °C |
| Storage Comment: | Store at -20°C or lower. Aliquot to avoid repeated freezing and thawing. |

Images



ELISA

Image 1. Detection limit for recombinant GST tagged NRXN1 is 0.1 ng/ml as a capture antibody.



Western Blotting

Image 2. Western Blot detection against Immunogen (36.74 kDa).