

Datasheet for ABIN948830  
**anti-RIN1 antibody (AA 1-783)**



[Go to Product page](#)

3 Images

Overview

Quantity:	100 µL
Target:	RIN1
Binding Specificity:	AA 1-783
Reactivity:	Human
Host:	Rabbit
Clonality:	Polyclonal
Conjugate:	This RIN1 antibody is un-conjugated
Application:	Western Blotting (WB), Immunoprecipitation (IP)

Product Details

Purpose:	Rabbit polyclonal antibody raised against a full-length human RIN1 protein.
Immunogen:	RIN1 (NP_004283.2, 1 a.a. ~ 783 a.a) full-length human protein.
Sequence:	MESPGESGAG SPGAPSPSSF TTGHLAREKP AQDPLYDVPN ASGGQAGGPQ RPGRVVSRLRE RLLLTRPVWL QLQANAAAAL HMLRTEPPGT FLVRKSNTRQ CQALCMRLPE ASGSPFVSSH YILESPGGVS LEGSELMFPD LVQLICAYCH TRDILLPLQ LPRAIHAAT HKELEAISHL GIEFWSSSLN IKAQRGPAGG PVLPLKARS PQELDQGTGA ALCFFNPLFP GDLGPTKREK FKRSFKVRVS TETSSPLSPP AVPPPPVPL PGAVPSQTER LPPCQLRRE SSVGYRVPAG SGPSLPPMPS LQEVDCGSPS SSEEVPGS RGSPATSPHL GRRRPLLRSM SAAFCSLLAP ERQVGRAAAA LMQDRHTAAG QLVQDLLTQV RAGPEPQELQ GIRQALSRAR AMLSaelGPE KLLSPKRLEH VLEKSLHCSV LKPLRPILAA RLRRRLAADG SLGRLAELRL LARAQGPAGF GSHLSLPSPV ELEQVRQKLL QLLRTYSPSA QVKRLLQACK LLYMALRTQE GEGAGADEFL PLLSLVLAHC DLPELLLEAE YMSELLEPSL LTGEGGYLT SLSASLALLS GLGQAHTLPL

## Product Details

---

SPVQELRRSL SLWEQRRLPA THCFQHLLRV AYQDPSSGCT SKTLAVPPEA SIATLNQLCA  
TKFRVTQPNT FGLFLYKEQG YHRLPPGALA HRLPTTGYL V YRRAEWPETQ GAVTEEEGSG  
QSEARSRGEE QGCQGDGDAG VKASPRDIRE QSETTAEGGQ GQAQEGPAQP GEPEAEGSRA AEE

Cross-Reactivity: Human

Characteristics: Antibody reactive against mammalian transfected lysate.

## Target Details

---

Target: RIN1

Alternative Name: RIN1 ([RIN1 Products](#))

Background: Full Gene Name: Ras and Rab interactor 1  
Synonyms:

Gene ID: 9610

NCBI Accession: [NM\\_004292](#)

## Application Details

---

Application Notes: Optimal working dilution should be determined by the investigator.

Restrictions: For Research Use only

## Handling

---

Format: Liquid

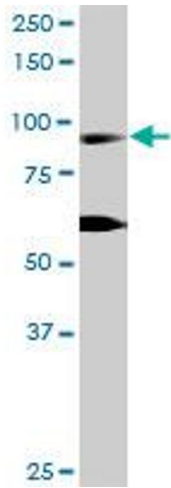
Buffer: No additive

Preservative: Without preservative

Handling Advice: Aliquot to avoid repeated freezing and thawing.

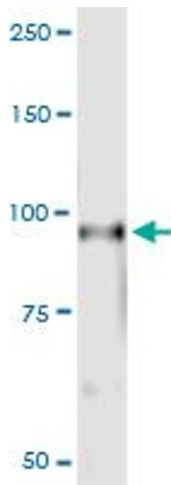
Storage: -20 °C

Storage Comment: Store at -20°C or lower. Aliquot to avoid repeated freezing and thawing.



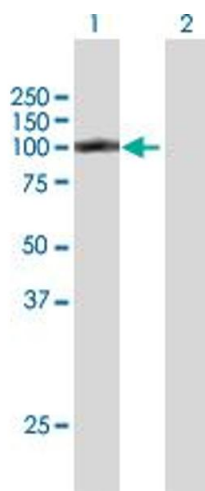
### Western Blotting

**Image 1.** RIN1 MaxPab rabbit polyclonal antibody. Western Blot analysis of RIN1 expression in IMR-32.



### Immunoprecipitation

**Image 2.** Immunoprecipitation of RIN1 transfected lysate using anti-RIN1 MaxPab rabbit polyclonal antibody and Protein A Magnetic Bead , and immunoblotted with RIN1 purified MaxPab mouse polyclonal antibody (B01P) .



### Western Blotting

**Image 3.** Western Blot analysis of RIN1 expression in transfected 293T cell line by RIN1 MaxPab polyclonal antibody.

Lane 1: RIN1 transfected lysate(84.1 KDa).

Lane 2: Non-transfected lysate.