



[Go to Product page](#)

Datasheet for ABIN948832  
**anti-GUCA1C antibody (AA 1-209)**

1 Image

Overview

Quantity:	50 µg
Target:	GUCA1C
Binding Specificity:	AA 1-209
Reactivity:	Human
Host:	Mouse
Clonality:	Polyclonal
Conjugate:	This GUCA1C antibody is un-conjugated
Application:	Western Blotting (WB)

Product Details

Purpose:	Mouse polyclonal antibody raised against a full-length human GUCA1C protein.
Immunogen:	GUCA1C (NP_005450.2, 1 a.a. ~ 209 a.a) full-length human protein.
Sequence:	MGNNGKSIAGD QKAVPTQETH VWYRTFMMEY PSLGLQTLHEF KTLGLGLQGLN QKANKHIDQV YNTFDTNKDG FIDFLEFIAA VNLIMQEKME QKLKWFYFKLY DADGNNGSIDK NELLDMFMAV QALNGQQTLS PEEFINLVFH KIDINNDGEL TLEEFINGMA KDQDLLEIVY KSFDFSNVLR VICNGKQPDM ETDSSKSPDK AGLGKVKMK
Cross-Reactivity:	Human
Characteristics:	Antibody reactive against mammalian transfected lysate.

Target Details

Target:	GUCA1C
---------	--------

## Target Details

Alternative Name:	GUCA1C ( <a href="#">GUCA1C Products</a> )
Background:	Full Gene Name: guanylate cyclase activator 1C Synonyms: GCAP3,MGC120158,MGC120159
Gene ID:	9626
NCBI Accession:	<a href="#">NM_005459</a>
Pathways:	<a href="#">Regulation of G-Protein Coupled Receptor Protein Signaling</a> , <a href="#">Phototransduction</a>

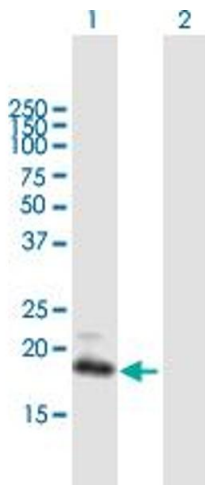
## Application Details

Application Notes:	Optimal working dilution should be determined by the investigator.
Restrictions:	For Research Use only

## Handling

Buffer:	In 1x PBS, pH 7.4
Handling Advice:	Aliquot to avoid repeated freezing and thawing.
Storage:	-20 °C
Storage Comment:	Store at -20°C or lower. Aliquot to avoid repeated freezing and thawing.

## Images



### Western Blotting

**Image 1.** Western Blot analysis of GUCA1C expression in transfected 293T cell line by GUCA1C MaxPab polyclonal antibody.

Lane 1: GUCA1C transfected lysate(22.99 KDa).

Lane 2: Non-transfected lysate.