



[Go to Product page](#)

Datasheet for ABIN948856

anti-GINS1 antibody (AA 1-196)

3 Images

Overview

Quantity:	50 µg
Target:	GINS1
Binding Specificity:	AA 1-196
Reactivity:	Human
Host:	Mouse
Clonality:	Polyclonal
Conjugate:	This GINS1 antibody is un-conjugated
Application:	Western Blotting (WB), Immunofluorescence (IF)

Product Details

Purpose:	Mouse polyclonal antibody raised against a full-length human GINS1 protein.
Immunogen:	GINS1 (AAH12542, 1 a.a. ~ 196 a.a) full-length human protein.
Sequence:	MFCEKAMELI RELHRAPEGQ LPAFNEDGLR QVLEEMKALY EQNQSDVNEA KSGGRSDLIP TIKFRHCSLL RNRRECTVAYL YDRLLRIRAL RWEYGSILPN ALRFHMAAEE MEWFNNYKRS LATYMRLGG DEGLDITQDM KPPKSLYIEV RCLKDYGEFE VDDGTSVLLK KNSQHFLPRW KCEQLIRQGV LEHILS
Cross-Reactivity:	Human
Characteristics:	Antibody reactive against mammalian transfected lysate.

Target Details

Target:	GINS1
---------	-------

Target Details

Alternative Name:	GINS1 (GINS1 Products)
Background:	Full Gene Name: GINS complex subunit 1 (Psf1 homolog) Synonyms: KIAA0186,PSF1
Gene ID:	9837
Pathways:	DNA Replication , Synthesis of DNA

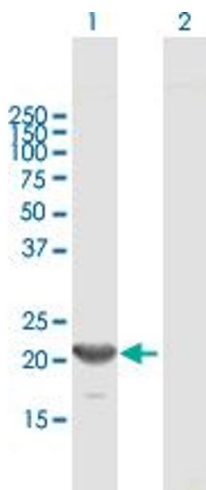
Application Details

Application Notes:	Optimal working dilution should be determined by the investigator.
Restrictions:	For Research Use only

Handling

Buffer:	In 1x PBS, pH 7.4
Handling Advice:	Aliquot to avoid repeated freezing and thawing.
Storage:	-20 °C
Storage Comment:	Store at -20°C or lower. Aliquot to avoid repeated freezing and thawing.

Images

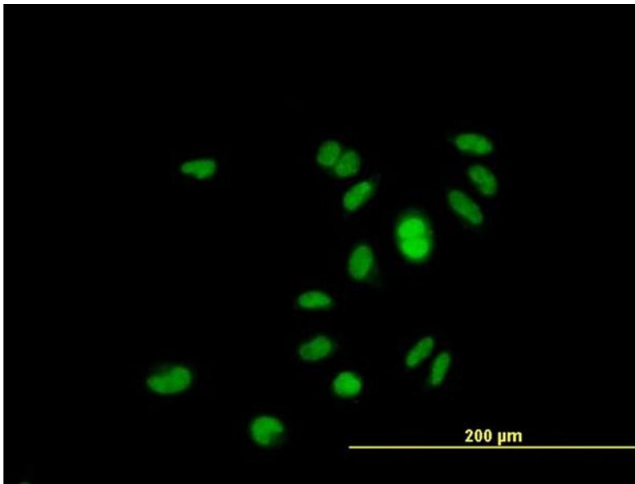


Western Blotting

Image 1. Western Blot analysis of GINS1 expression in transfected 293T cell line by GINS1 MaxPab polyclonal antibody.

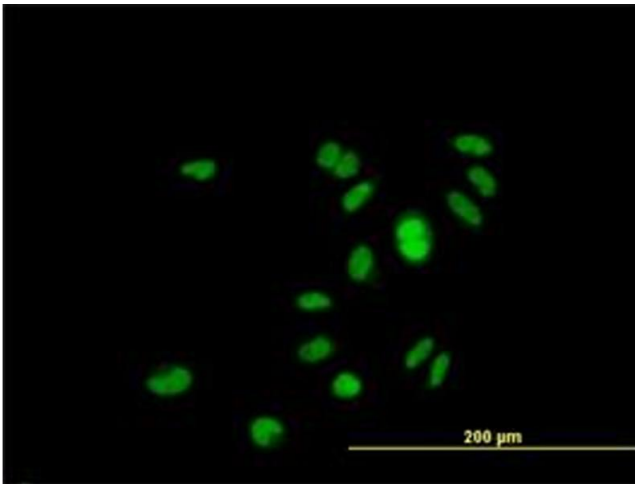
Lane 1: GINS1 transfected lysate(21.56 KDa).

Lane 2: Non-transfected lysate.



Immunofluorescence

Image 2. Immunofluorescence of purified MaxPab antibody to GINS1 on HeLa cell. [antibody concentration 10 μ g/ml]



Immunofluorescence

Image 3. Immunofluorescence of purified MaxPab antibody to GINS1 on HeLa cell. (antibody concentration 10 μ g/mL)