

Datasheet for ABIN94889

anti-Alcohol Dehydrogenase (ADH) antibody[Go to Product page](#)**1** Image

Overview

Quantity:	2 mL
Target:	Alcohol Dehydrogenase (ADH)
Reactivity:	Saccharomyces cerevisiae
Host:	Rabbit
Clonality:	Polyclonal
Conjugate:	Un-conjugated
Application:	Western Blotting (WB), ELISA

Product Details

Immunogen:	This antibody was prepared from whole rabbit serum produced by repeated immunizations with full length Alcohol Dehydrogenase isolated from yeast. Immunogen type: Native
Characteristics:	Concentration Definition: by Refractometry
Purification:	This product was prepared from monospecific antiserum by a delipidation and defibrination. Assay by immunoelectrophoresis resulted in a single precipitin arc against purified and partially purified Alcohol Dehydrogenase [Yeast].

Target Details

Target:	Alcohol Dehydrogenase (ADH)
Alternative Name:	Alcohol Dehydrogenase (ADH Products)
Background:	Alcohol dehydrogenase is an isozyme that preferentially catalyzes the conversion of

Target Details

acetaldehyde to acetone. Alcohol dehydrogenase has an apparent molecular weight of 37 kDa (monomer subunit) and forms a homotetramer. This enzyme acts on a variety of primary unbranched aliphatic alcohols and requires 2 bound zinc ions per subunit. Alcohol dehydrogenase shows a cytoplasmic localization. Microheterogeneities may also occur at positions 137, 138, 242-244, and 255 and near position 287.

Synonyms: Alcohol dehydrogenase 1 EC=1.1.1.1 Alcohol dehydrogenase I YADH-1

Gene ID:	2538902, 12643994
----------	-------------------

UniProt:	P00330
----------	------------------------

Application Details

Application Notes:	This antibody has been tested for use in ELISA and by western blot.
--------------------	---

Restrictions:	For Research Use only
---------------	-----------------------

Handling

Format:	Lyophilized
---------	-------------

Reconstitution:	Restore with deionized water (or equivalent)
-----------------	--

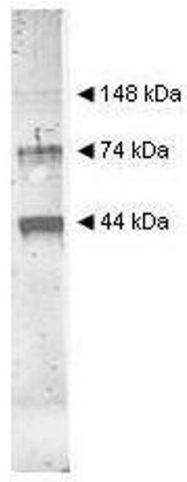
Concentration:	90 mg/mL
----------------	----------

Buffer:	0.02 M Potassium Phosphate, 0.15 M Sodium Chloride, pH 7.2
---------	--

Preservative:	Sodium azide
---------------	--------------

Precaution of Use:	This product contains sodium azide: a POISONOUS AND HAZARDOUS SUBSTANCE which should be handled by trained staff only.
--------------------	--

Storage:	4 °C
----------	------



Western Blotting

Image 1. Western blot analysis with Anti-Alcohol Dehydrogenase antibody was used to detect yeast Alcohol Dehydrogenase. Comparison to molecular weight markers (not shown) indicates estimated molecular weights consistent with monomer, dimer and tetramer present in this preparation. The blot was incubated with a 1:500 dilution of the antibody at room temperature for 2 h followed by detection using 800 labeled Goat-a-Rabbit IgG [H&L] diluted 1:5,000 for 45 min at room temperature. The 800 fluorescence image was captured using the Infrared Imaging System developed by LI-COR. IRDye is a trademark of LI-COR, Inc. Other detection systems will yield similar results.