



[Go to Product page](#)

Datasheet for ABIN948894

anti-ARFRP1 antibody (AA 1-201)

1 Image

Overview

Quantity:	50 µg
Target:	ARFRP1
Binding Specificity:	AA 1-201
Reactivity:	Human
Host:	Mouse
Clonality:	Polyclonal
Conjugate:	This ARFRP1 antibody is un-conjugated
Application:	Western Blotting (WB)

Product Details

Purpose:	Mouse polyclonal antibody raised against a full-length human ARFRP1 protein.
Immunogen:	ARFRP1 (NP_003215.1, 1 a.a. ~ 201 a.a) full-length human protein.
Sequence:	MYTLLSGLYK YMFQKDEYCI LILGLDNAGK TTFLEQSKTR FNKNYKGMSL SKITTTVGLN IGTVDVGKAR LMFWDLGGQE ELQSLWDKYY AECHGVYVI DSTDEERLAE SKQAFEKVVV SEALCGVPVL VLANKQDVET CLSIPDIKTA FSDCTSKIGR RDCLTQACSA LTGKGVREGI EWMVKCVVRN VHRPPRQRDI T
Cross-Reactivity:	Human
Characteristics:	Antibody reactive against mammalian transfected lysate.

Target Details

Target:	ARFRP1
---------	--------

Target Details

Alternative Name:	ARFRP1 (ARFRP1 Products)
Background:	Full Gene Name: ADP-ribosylation factor related protein 1 Synonyms: ARL18,ARP,Arp1
Gene ID:	10139
NCBI Accession:	NM_003224

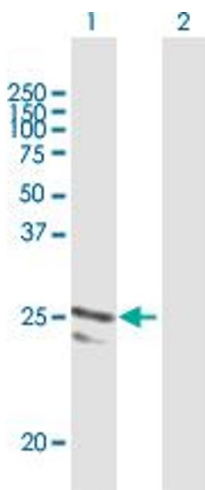
Application Details

Application Notes:	Optimal working dilution should be determined by the investigator.
Restrictions:	For Research Use only

Handling

Buffer:	In 1x PBS, pH 7.4
Handling Advice:	Aliquot to avoid repeated freezing and thawing.
Storage:	-20 °C
Storage Comment:	Store at -20°C or lower. Aliquot to avoid repeated freezing and thawing.

Images



Western Blotting

Image 1. Western Blot analysis of ARFRP1 expression in transfected 293T cell line by ARFRP1 MaxPab polyclonal antibody.

Lane 1: ARFRP1 transfected lysate(22.60 KDa).

Lane 2: Non-transfected lysate.