



[Go to Product page](#)

Datasheet for ABIN948902

## anti-THO Complex 4 antibody (AA 106-193)

### 4 Images

#### Overview

Quantity:	100 µg
Target:	THO Complex 4 (THOC4)
Binding Specificity:	AA 106-193
Reactivity:	Human
Host:	Mouse
Clonality:	Monoclonal
Conjugate:	This THO Complex 4 antibody is un-conjugated
Application:	Western Blotting (WB), ELISA, Immunofluorescence (IF)

#### Product Details

Purpose:	Mouse monoclonal antibody raised against a partial recombinant ALYREF.
Immunogen:	ALYREF (NP_005773.2, 106 a.a. ~ 193 a.a) partial recombinant protein with GST tag. MW of the GST tag alone is 26 KDa.
Sequence:	GKLLVSNLDF GVSADADIQEL FAEFGTLKKA AVHYDRSGRS LGTADVHFER KADALKAMKQ YNGVPLDGRP MNIQLVTSQI DAQRRPAQ
Clone:	2G8
Isotype:	IgG2a
Cross-Reactivity:	Human
Characteristics:	Antibody Reactive Against Recombinant Protein.

## Target Details

Target:	THO Complex 4 (THOC4)
Alternative Name:	ALYREF ( <a href="#">THOC4 Products</a> )
Background:	Full Gene Name: Aly/REF export factor Synonyms: ALY,ALY/REF,BEF,REF,THOC4
Gene ID:	10189
NCBI Accession:	<a href="#">NM_005782</a>

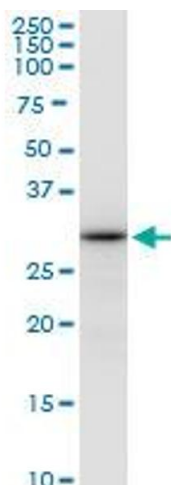
## Application Details

Application Notes:	Optimal working dilution should be determined by the investigator.
Restrictions:	For Research Use only

## Handling

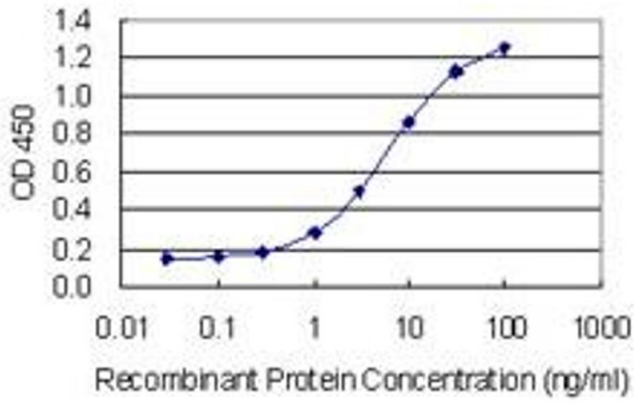
Buffer:	In 1x PBS, pH 7.4
Handling Advice:	Aliquot to avoid repeated freezing and thawing.
Storage:	-20 °C
Storage Comment:	Store at -20°C or lower. Aliquot to avoid repeated freezing and thawing.

## Images



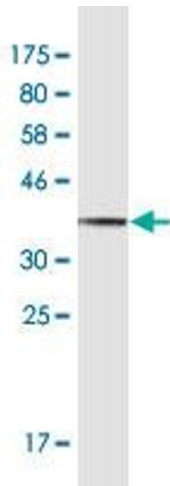
### Western Blotting

**Image 1.** ALYREF monoclonal antibody (M03), clone 2G8.  
Western Blot analysis of ALYREF expression in Jurkat.



### ELISA

**Image 2.** Detection limit for recombinant GST tagged ALYREF is 0.1 ng/ml as a capture antibody.



### Western Blotting

**Image 3.** Western Blot detection against Immunogen (35.42 kDa).

Please check the [product details page](#) for more images. Overall 4 images are available for ABIN948902.