



[Go to Product page](#)

Datasheet for ABIN948905  
**anti-PSME3 antibody (AA 1-254)**

3 Images

Overview

Quantity:	50 µg
Target:	PSME3
Binding Specificity:	AA 1-254
Reactivity:	Human
Host:	Mouse
Clonality:	Polyclonal
Conjugate:	This PSME3 antibody is un-conjugated
Application:	Western Blotting (WB), Immunofluorescence (IF)

Product Details

Purpose:	Mouse polyclonal antibody raised against a full-length human PSME3 protein.
Immunogen:	PSME3 (AAH01423.1, 1 a.a. ~ 254 a.a) full-length human protein.
Sequence:	MASLLKVDQE VKLKVDSFRE RITSEAEDLV ANFFPKLLE LDSFLKEPIL NIHDLTQIHS DVNLPVPDPI LLTNSHDGLD GPTYKKRRLD ECEAFQGTK VVMPNGMLK SNQQLVDIIE KVKPEIRLLI EKCNTVKMWV QLLIPRIEDG NNFGVSIQEE TVAELRTVES EAASYLDQIS RYYITRAKLV SKIAKYPHVE DYRRTVTEID EKEYISLRLLI ISELRNQYVT LHDMILKNIE KIKRPRSSNA ETLY
Cross-Reactivity:	Human
Characteristics:	Antibody reactive against mammalian transfected lysate.

## Target Details

Target:	PSME3
Alternative Name:	PSME3 ( <a href="#">PSME3 Products</a> )
Background:	Full Gene Name: proteasome (prosome, macropain) activator subunit 3 (PA28 gamma, Ki) Synonyms: Ki,PA28-gamma,PA28G,REG-GAMMA
Gene ID:	10197
Pathways:	<a href="#">Mitotic G1-G1/S Phases</a> , <a href="#">DNA Replication</a> , <a href="#">Positive Regulation of Endopeptidase Activity</a> , <a href="#">Hepatitis C</a> , <a href="#">Synthesis of DNA</a>

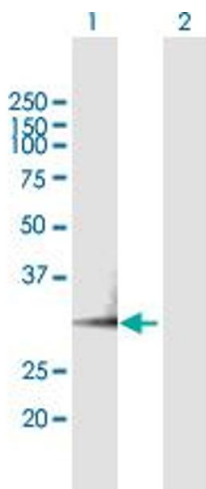
## Application Details

Application Notes:	Optimal working dilution should be determined by the investigator.
Restrictions:	For Research Use only

## Handling

Buffer:	In 1x PBS, pH 7.4
Handling Advice:	Aliquot to avoid repeated freezing and thawing.
Storage:	-20 °C
Storage Comment:	Store at -20°C or lower. Aliquot to avoid repeated freezing and thawing.

## Images

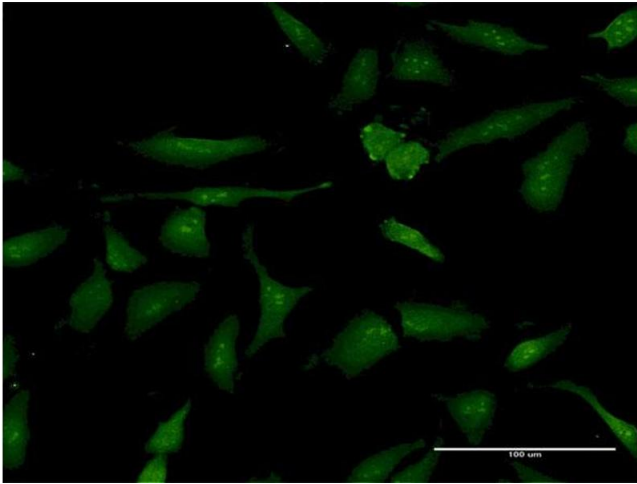


### Western Blotting

**Image 1.** Western Blot analysis of PSME3 expression in transfected 293T cell line by PSME3 MaxPab polyclonal antibody.

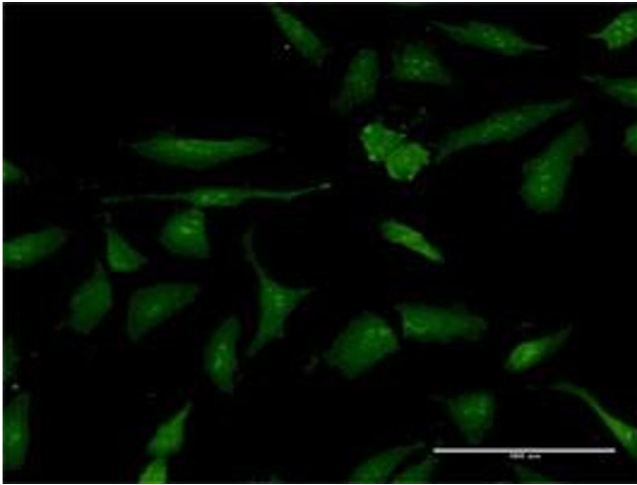
Lane 1: PSME3 transfected lysate(28.05 KDa).

Lane 2: Non-transfected lysate.



#### Immunofluorescence

**Image 2.** Immunofluorescence of purified MaxPab antibody to PSME3 on HeLa cell. [antibody concentration 30 ug/ml]



#### Immunofluorescence

**Image 3.** Immunofluorescence of purified MaxPab antibody to PSME3 on HeLa cell. (antibody concentration 30  $\mu$ g/mL)