

Datasheet for ABIN94894
anti-Aldehyde Dehydrogenase antibody[Go to Product page](#)

1 Image

Overview

Quantity:	2 mL
Target:	Aldehyde Dehydrogenase (ALDH)
Reactivity:	Saccharomyces cerevisiae
Host:	Rabbit
Clonality:	Polyclonal
Conjugate:	This Aldehyde Dehydrogenase antibody is un-conjugated
Application:	ELISA

Product Details

Immunogen:	Aldehyde Dehydrogenase [Yeast] Immunogen type: Native
Characteristics:	Concentration Definition: by Refractometry

Target Details

Target:	Aldehyde Dehydrogenase (ALDH)
Alternative Name:	Aldehyde Dehydrogenase (ALDH Products)
Background:	Synonyms: Aldehyde dehydrogenase [NAD(P)+] 1 ALD2, ALD5
Gene ID:	855206
UniProt:	P47771

Application Details

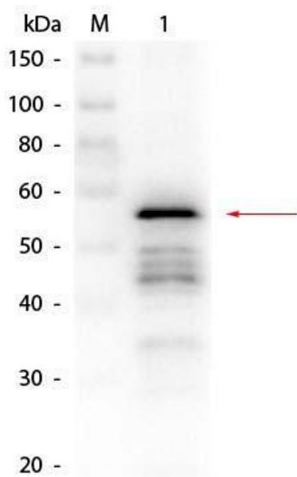
Application Notes: This product has been assayed against 1.0 ug of Aldehyde Dehydrogenase [Yeast] in a standard sandwich ELISA using Peroxidase conjugated Affinity Purified anti-Rabbit IgG [H&L] Goat) and (ABTS (2,2'-azino-bis-[3-ethylbenthiazoline-6-sulfonic acid])) as a substrate for 30 minutes at room temperature. A working dilution of 1:3,000 to 1:16,000 of the reconstitution concentration is suggested for this product.

Restrictions: For Research Use only

Handling

Format:	Lyophilized
Reconstitution:	Restore with deionized water (or equivalent)
Concentration:	85 mg/mL
Buffer:	0.02 M Potassium Phosphate, 0.15 M Sodium Chloride, pH 7.2
Preservative:	Sodium azide
Precaution of Use:	This product contains sodium azide: a POISONOUS AND HAZARDOUS SUBSTANCE which should be handled by trained staff only.
Storage:	4 °C

Images



Western Blotting

Image 1. Western Blot of Rabbit anti-Aldehyde Dehydrogenase (yeast) Antibody. Lane 1: Aldehyde Dehydrogenase (yeast). Load: 50 ng per lane. Primary antibody: Rabbit anti-Aldehyde Dehydrogenase (yeast) Antibody at 1:500 overnight at 4°C. Secondary antibody: Peroxidase Conjugated Goat anti-Rabbit IgG secondary antibody at 1:40,000 for 30 min at RT. Block: ABIN925618 for 30 min at RT. Predicted/Observed size: 55 kDa, 55 kDa for Aldehyde Dehydrogenase (yeast).