

Datasheet for ABIN948947
anti-Semaphorin 6C antibody (AA 1-930)



[Go to Product page](#)

1 Image

Overview

Quantity:	50 µg
Target:	Semaphorin 6C (SEMA6C)
Binding Specificity:	AA 1-930
Reactivity:	Human
Host:	Mouse
Clonality:	Polyclonal
Conjugate:	This Semaphorin 6C antibody is un-conjugated
Application:	Western Blotting (WB)

Product Details

Purpose:	Mouse polyclonal antibody raised against a full-length human SEMA6C protein.
Immunogen:	SEMA6C (NP_112175, 1 a.a. ~ 930 a.a) full-length human protein.
Sequence:	MPRAPHMPL LLLLLLLSLP HTQAAFPQDP LPLLISDLQG TSPLSWFRGL EDDAVAAELG LDFQRFLTLN RTLLVAARDH VFSFDLQAE EGEGLVPNKY LTWRSQDVEN CAVRGKLTDE CYNIRVLVP WDSQTLLACG TNSFSPVCRS YGITSLQQEG EELSGQARCP FDATQSNVAI FAEGSLYSAT AADFQASDAV VYRSLGPQPP LRS AKYDSKW LREPHFVQAL EHG D HVYFFF REVSVEDARL GRVQFSRVAR VCKRDMGGSP RALDRHWTSF LKLRLNCSVP GDSTFYFDVL QALTGPVNLH GRSALFGVFT TQTNSIPGSA VCAFYLDEIE RGFEKGKFEQ RSLDGAWTPV SEDRVPSRP GSCAGVGGAA LFSSSRDLPD DVLTFIKAHP LLDPAVPPVT HQPLLTLTSR ALLTQVAVDG MAGPHSNITV MFLGSNDGTV LKVLTPGGRS GGPEPILLEE IDAYSPARCS GKRTAQTARR IIGLELDTEG HRLFVAFSGC IVYLPLSRCA RHGACQRSCL ASQDPYCGWH SSRGCVDIRG SGGTDVDQAG NQESMEHGDC QDGATGSQSG PGDSAYGVRR DLPPASASRS

Product Details

VPIPLLLASV AAALFALGASV SGLLVSCACR RAHRRRGKDI ETPGLPRPLS LRSLARLHGG
GPEPPPPSKD GDAVQTPQLY TTFLPPPEGV PPELACLPT PESTPELPVK HLRAAGDPWE
WNQNRNNAKE GPGRSRGGHA AGGPAPRVLV RPPPPGCPGQ AVEVTTLEEL LRYLHGPQPP
RKGAEPPAPL TSRALPPEPA PALLGGPSR PHECASPLRL DVPPEGRCAS APARPALSAP
APRLGVGGGR RLPFSGHRAP PALLTRVPSG GPSRYSGGPG KHLLYLGRPE GYRGRALKRV
DVEKPQLSLK PPLVGPSSRQ AVPNGGRFNF

Cross-Reactivity: Human

Characteristics: Antibody reactive against mammalian transfected lysate.

Target Details

Target: Semaphorin 6C (SEMA6C)

Alternative Name: SEMA6C ([SEMA6C Products](#))

Background: Full Gene Name: sema domain, transmembrane domain (TM), and cytoplasmic domain, (semaphorin) 6C

Synonyms: SEMAY,m-SemaY,m-SemaY2

Gene ID: 10500

NCBI Accession: [NM_030913](#)

Application Details

Application Notes: Optimal working dilution should be determined by the investigator.

Restrictions: For Research Use only

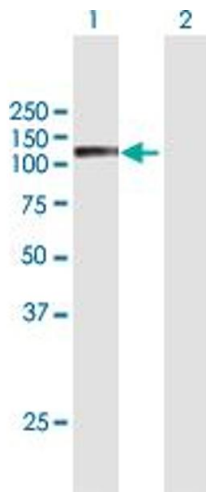
Handling

Buffer: In 1x PBS, pH 7.4

Handling Advice: Aliquot to avoid repeated freezing and thawing.

Storage: -20 °C

Storage Comment: Store at -20°C or lower. Aliquot to avoid repeated freezing and thawing.



Western Blotting

Image 1. Western Blot analysis of SEMA6C expression in transfected 293T cell line by SEMA6C MaxPab polyclonal antibody.

Lane 1: SEMA6C transfected lysate(102.3 KDa).

Lane 2: Non-transfected lysate.