



[Go to Product page](#)

Datasheet for ABIN948948  
**anti-SEMA6B antibody (AA 28-126)**

3 Images

Overview

Quantity:	100 µg
Target:	SEMA6B
Binding Specificity:	AA 28-126
Reactivity:	Human
Host:	Mouse
Clonality:	Monoclonal
Conjugate:	This SEMA6B antibody is un-conjugated
Application:	Western Blotting (WB), ELISA

Product Details

Purpose:	Mouse monoclonal antibody raised against a partial recombinant SEMA6B.
Immunogen:	SEMA6B (NP_064626, 28 a.a. ~ 126 a.a) partial recombinant protein with GST tag. MW of the GST tag alone is 26 KDa.
Sequence:	PEEPPPLSVA PRDYLNHYVPV FVGSGPGRLT PAEGADDLNI QRVLRVNRTL FIGDRDNLRYR VELEPPTSTE LRYQRKLTWR SNPSDINVCR MKGKQESEC
Clone:	2H7
Isotype:	IgG2a
Cross-Reactivity:	Human
Characteristics:	Antibody Reactive Against Recombinant Protein.

## Target Details

Target:	SEMA6B
Alternative Name:	SEMA6B ( <a href="#">SEMA6B Products</a> )
Background:	Full Gene Name: sema domain, transmembrane domain (TM), and cytoplasmic domain, (semaphorin) 6B Synonyms: SEM-SEMA-Y,SEMA-VIB,SEMAN,semaZ
Gene ID:	10501
NCBI Accession:	<a href="#">NM_020241</a>

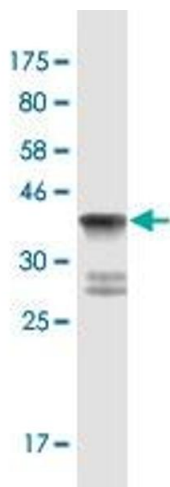
## Application Details

Application Notes:	Optimal working dilution should be determined by the investigator.
Restrictions:	For Research Use only

## Handling

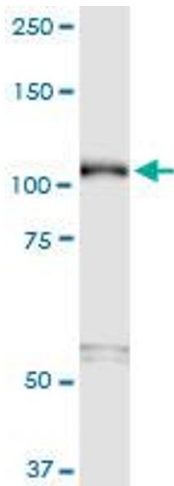
Buffer:	In 1x PBS, pH 7.4
Handling Advice:	Aliquot to avoid repeated freezing and thawing.
Storage:	-20 °C
Storage Comment:	Store at -20°C or lower. Aliquot to avoid repeated freezing and thawing.

## Images



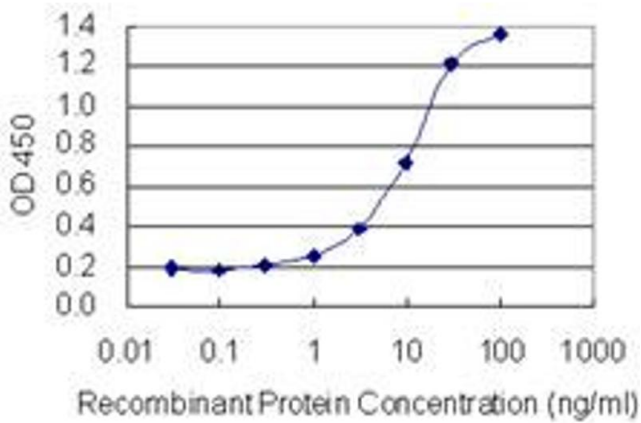
### Western Blotting

**Image 1.** Western Blot detection against Immunogen (36.63 kDa).



### Western Blotting

**Image 2.** SEMA6B monoclonal antibody (M01), clone 2H7. Western Blot analysis of SEMA6B expression in HepG2.



### ELISA

**Image 3.** Detection limit for recombinant GST tagged SEMA6B is 0.1 ng/ml as a capture antibody.