

Datasheet for ABIN948949
anti-APPBP2 antibody (AA 1-585)



[Go to Product page](#)

1 Image

Overview

Quantity:	50 µg
Target:	APPBP2
Binding Specificity:	AA 1-585
Reactivity:	Human
Host:	Mouse
Clonality:	Polyclonal
Conjugate:	This APPBP2 antibody is un-conjugated
Application:	Western Blotting (WB)

Product Details

Purpose:	Mouse polyclonal antibody raised against a full-length human APPBP2 protein.
Immunogen:	APPBP2 (NP_006371.2, 1 a.a. ~ 585 a.a) full-length human protein.
Sequence:	MAAVELEWIP ETLYNTAISA VVDNYIRSRR DIRSLPENIQ FDVYYKLYQQ GRLCQLGSEF CELEVFAKVL RALDKRHLLH HCFQALMDHG VKVASVLAYS FSRRCSYIAE SDAAVKEKAI QVGFVLGGFL SDAGWYSDAE KVFLSCLQLC TLHDEMLHWF RAVECCVRLH HVRNGNCKYH LGEETFKLAQ TYMDKLSKHG QQANKAALYG ELCALLFAKS HYDEAYKWCI EAMKEITAGL PVKVVVDVLR QASKACVVKR EFKKAEQLIK HAVYLARDHF GSKHPKYSdT LLDYGFYLLN VDNICQSVAI YQAALDIRQS VFGGKNIHVA TAHEDLAYSS YVHQYSSGKF DNALFHAERA IGIITHILPE DHLLASSKR VKALILEEIA IDCHNKETEQ RLLQEADLH LSSLQLAKKA FGEFNVQTAH YGNLGRLYQ SMRKFKEAEE MHIKAIQIKE QLLGQEDYEV ALSVGHLASL YNYDMNQYEN AEKLYLRSIA IGKCLFGEY SGLEYDYRGL IKLYNSIGNY EKVFEYHNVL SNWNRLRDRQ YSVTDALEDV STSPQSTEEV VQSFLISQNV EGPSC

Product Details

Cross-Reactivity:	Human
Characteristics:	Antibody reactive against mammalian transfected lysate.

Target Details

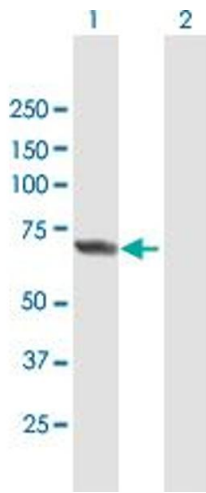
Target:	APPBP2
Alternative Name:	APPBP2 (APPBP2 Products)
Background:	Full Gene Name: amyloid beta precursor protein (cytoplasmic tail) binding protein 2 Synonyms: HS.84084,KIAA0228,PAT1
Gene ID:	10513
NCBI Accession:	NM_006380

Application Details

Application Notes:	Optimal working dilution should be determined by the investigator.
Restrictions:	For Research Use only

Handling

Buffer:	In 1x PBS, pH 7.4
Handling Advice:	Aliquot to avoid repeated freezing and thawing.
Storage:	-20 °C
Storage Comment:	Store at -20°C or lower. Aliquot to avoid repeated freezing and thawing.



Western Blotting

Image 1. Western Blot analysis of APPBP2 expression in transfected 293T cell line by APPBP2 MaxPab polyclonal antibody.

Lane 1: APPBP2 transfected lysate(64.35 KDa).

Lane 2: Non-transfected lysate.